



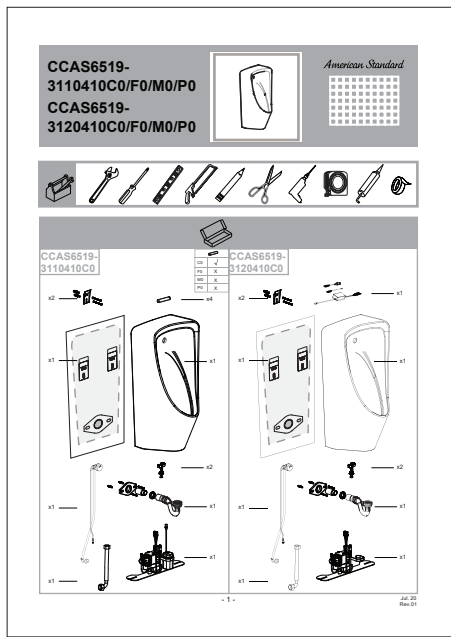
Link to Good Living

This document is a property of LIXIL IDC, it can neither be reproduced, nor communicated, without their authorization.

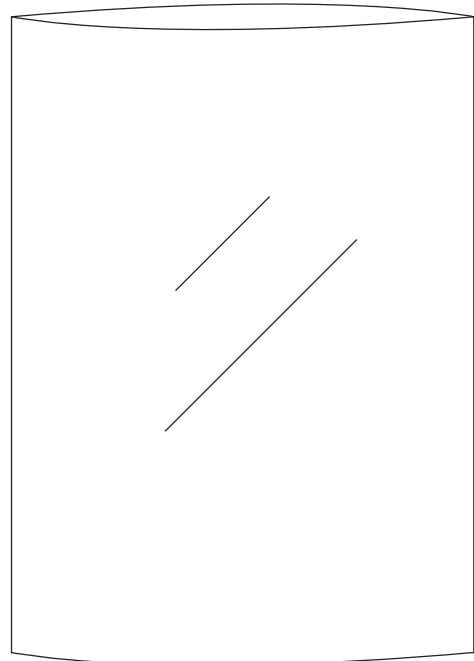
Description: installation manual, Lynbrook WH urinal	Drawn by Lilian	Checked by	Approval by
	Date 10/14/2020	Date	Date

Drawing No: 730-07-0004	Sheet No: -	Material: Paper, 80g	MKT/Customer approved by	QA approval by
Rev. # A.1	Print Color: Gray & Black	Size: A4		
			Date	Date

A4 paper

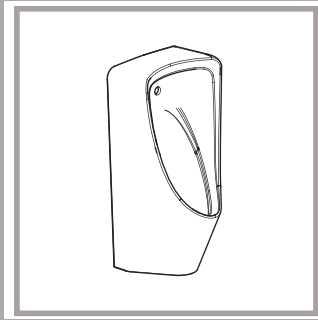


Plastic bag

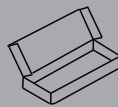
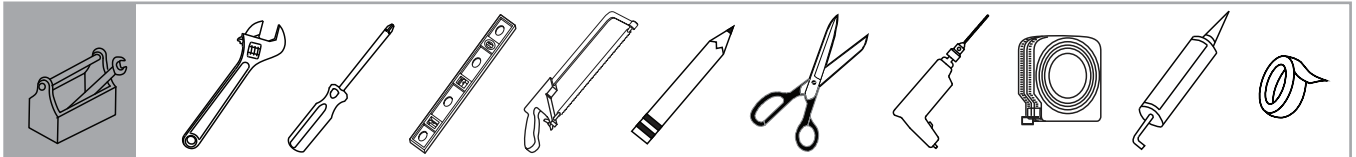
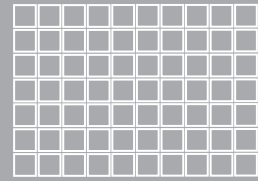


**CCAS6519-
3110410C0/F0/M0/P0**

**CCAS6519-
3120410C0/F0/M0/P0**



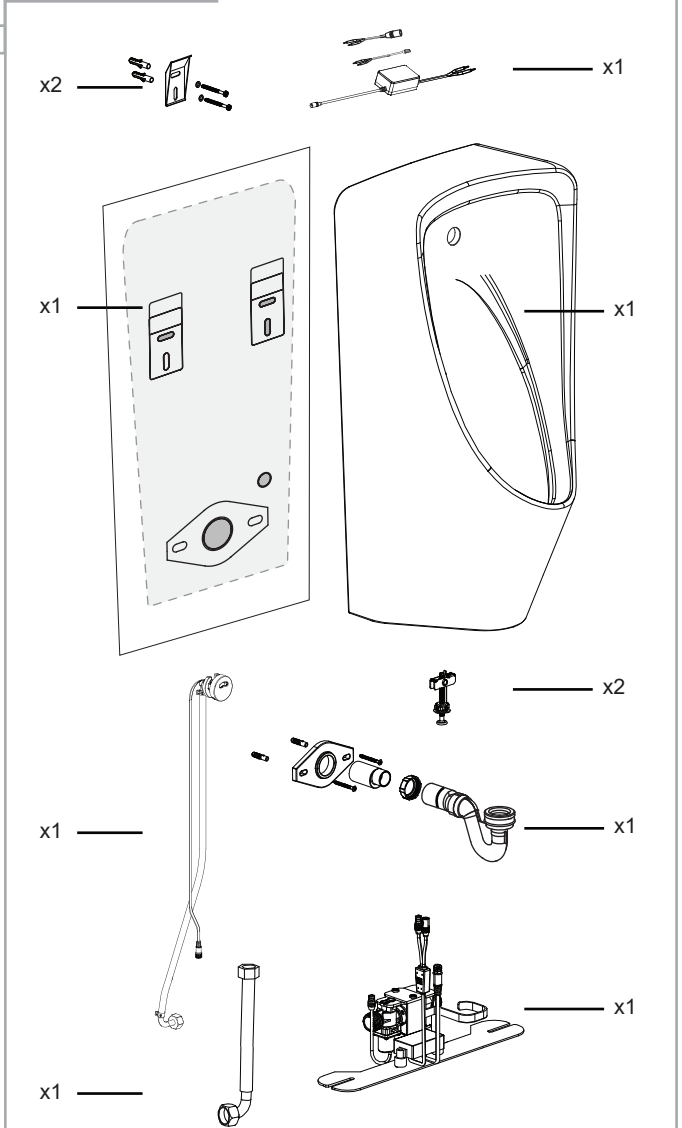
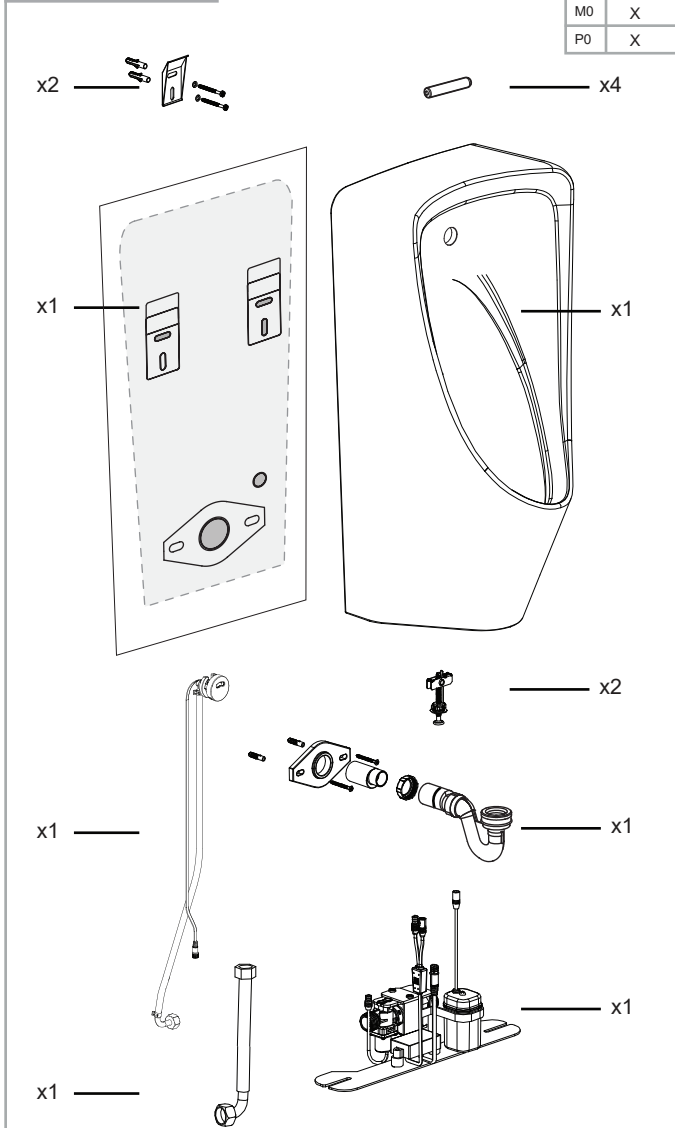
American Standard

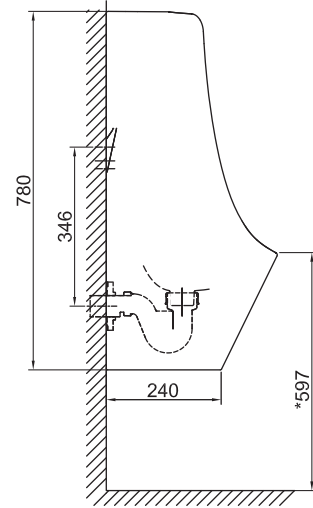
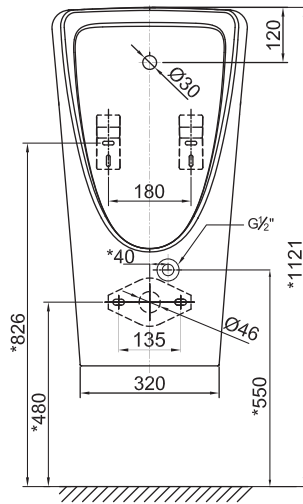
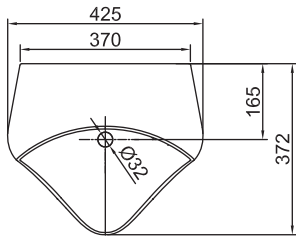


**CCAS6519-
3110410**

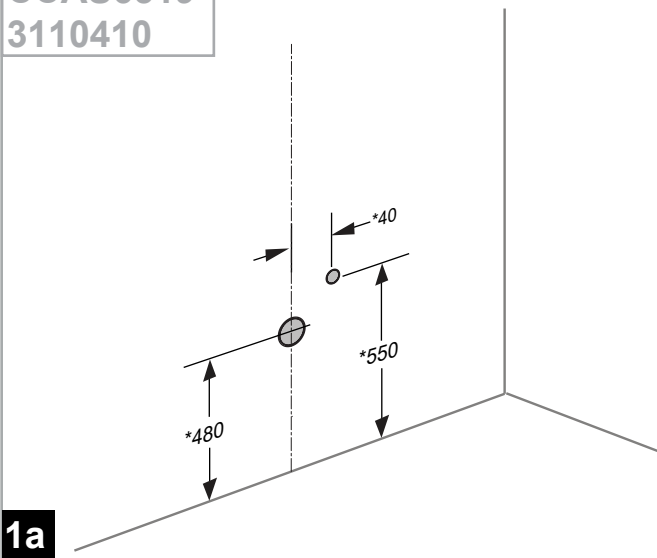
	✓
C0	✓
F0	X
M0	X
P0	X

**CCAS6519-
3120410**

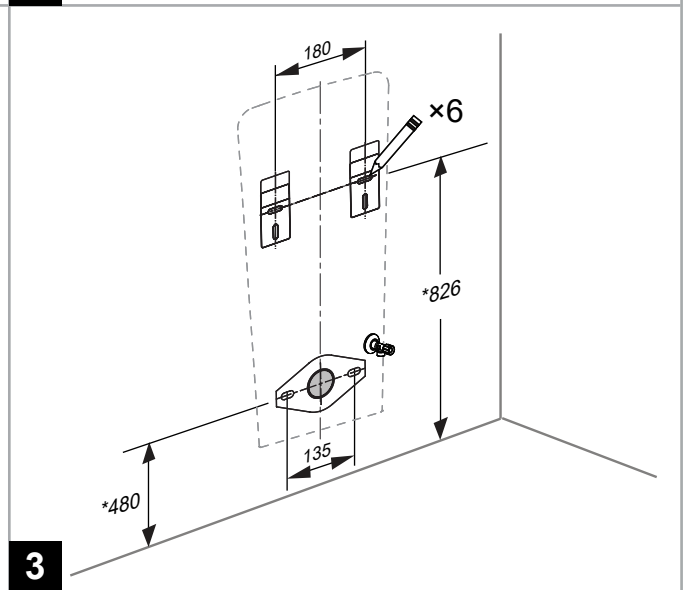
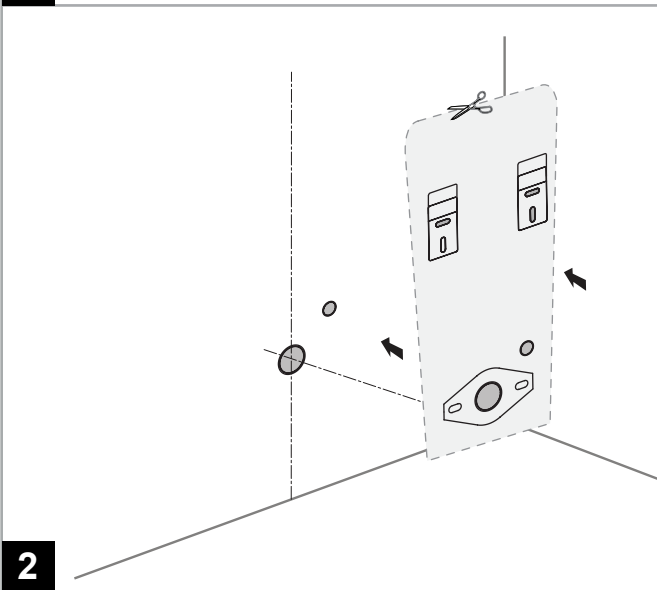
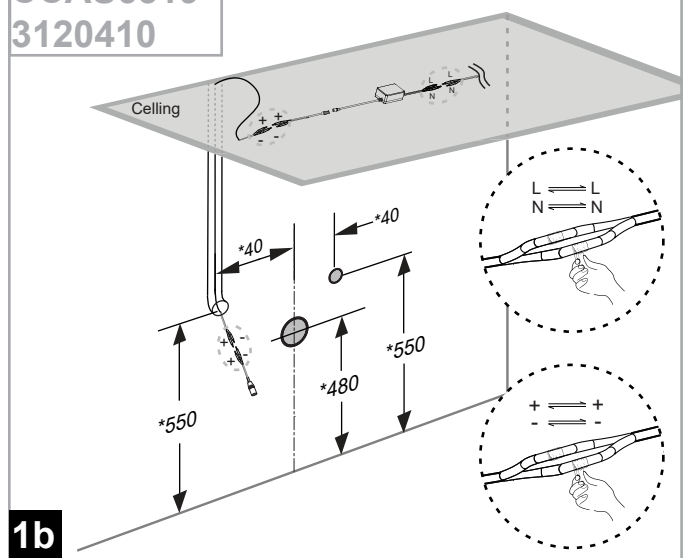


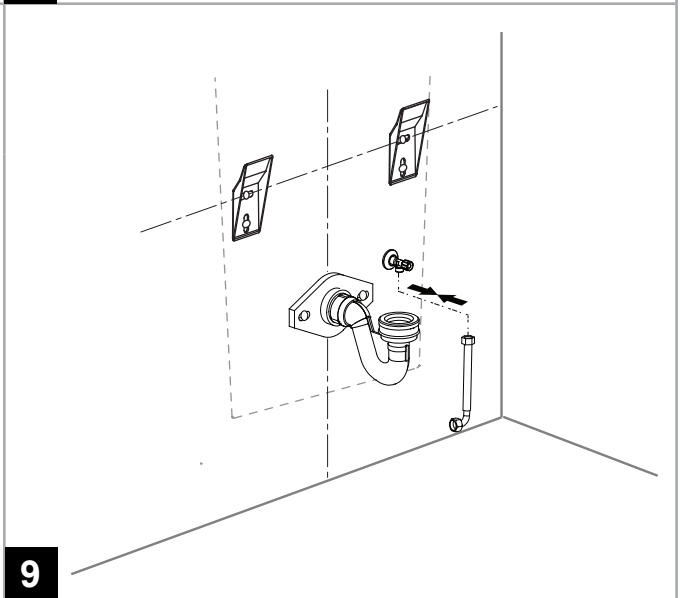
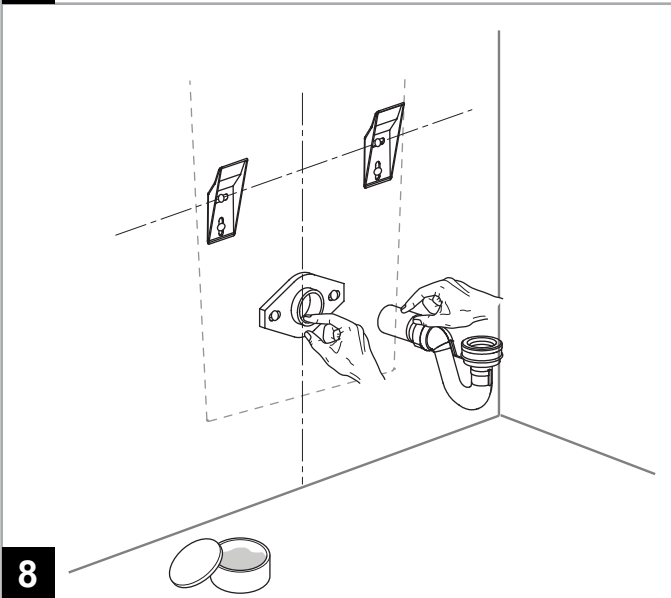
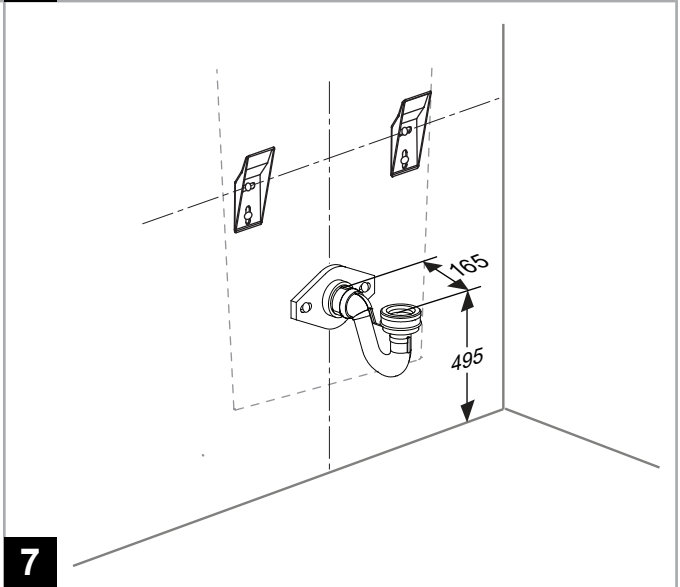
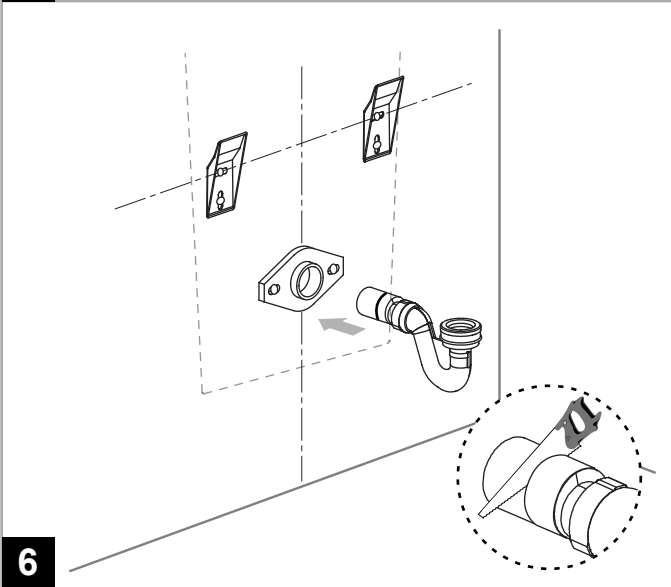
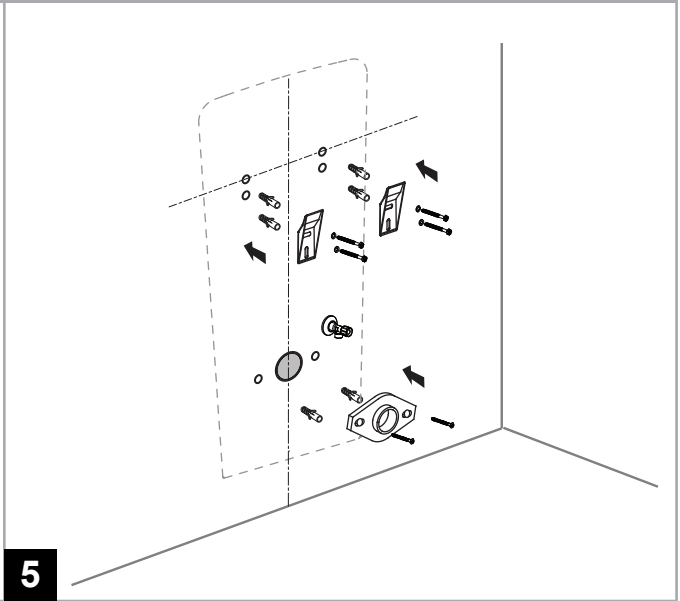
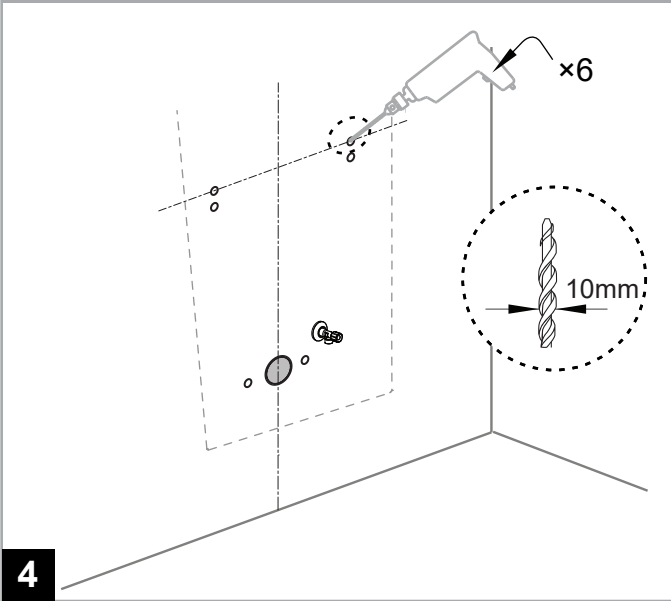


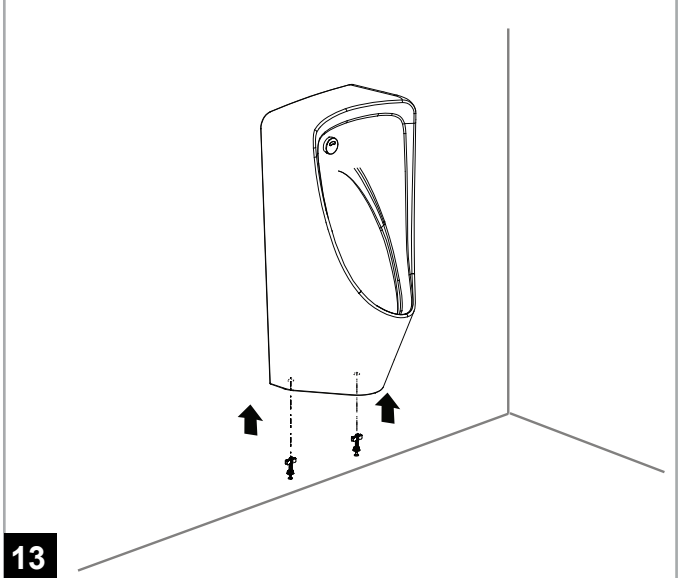
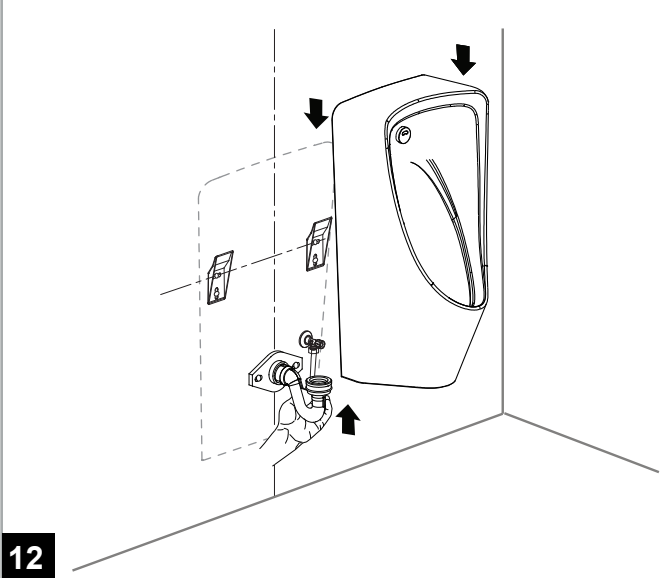
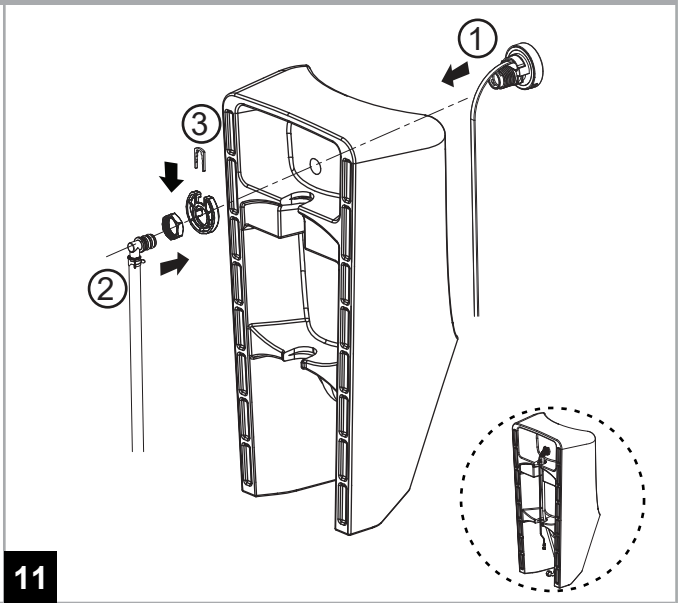
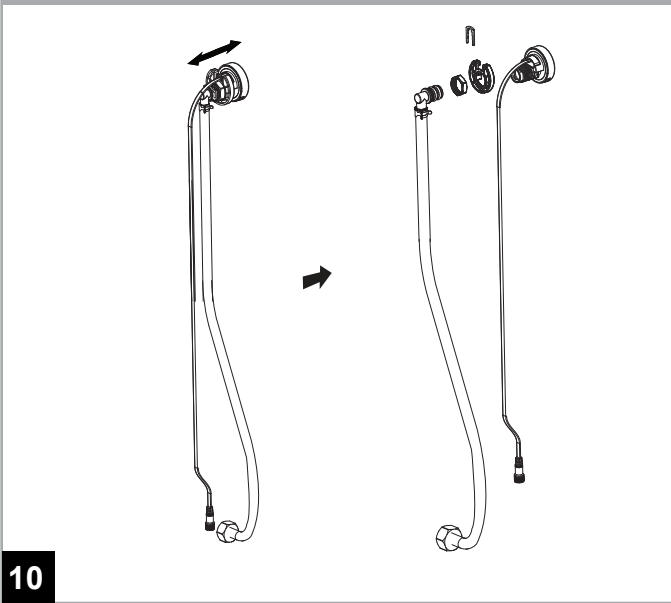
CCAS6519-3110410



CCAS6519-3120410

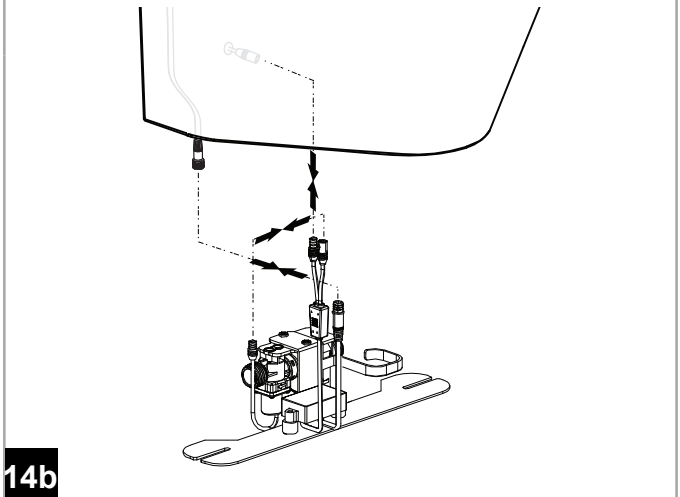
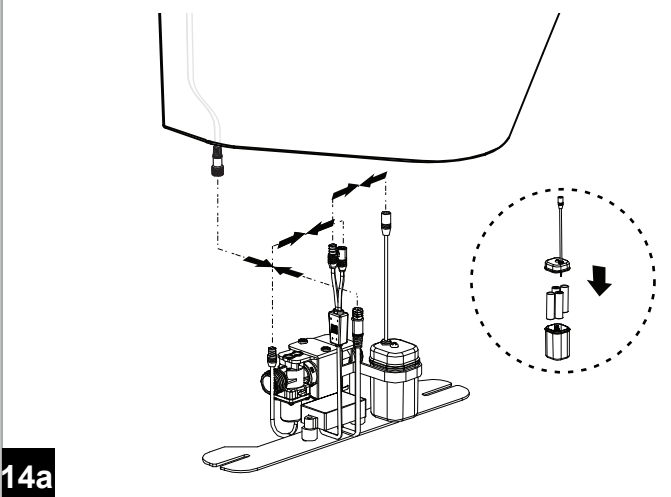






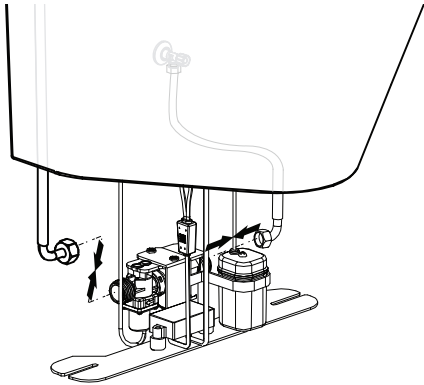
CCAS6519-3110410

CCAS6519-3120410



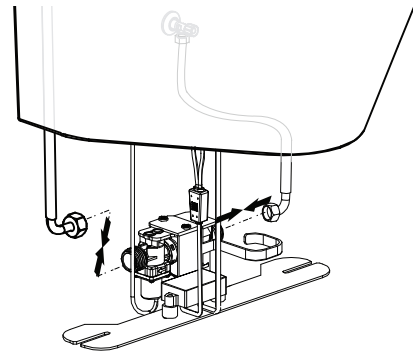


CCAS6519-3110410



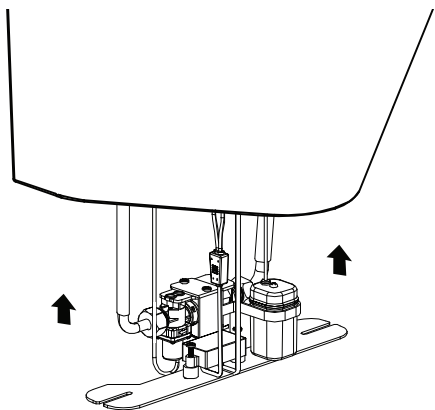
15a

CCAS6519-3120410



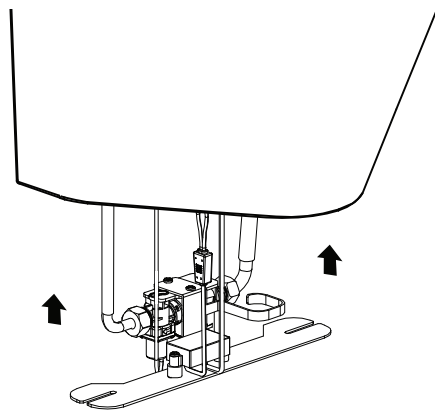
15b

CCAS6519-3110410

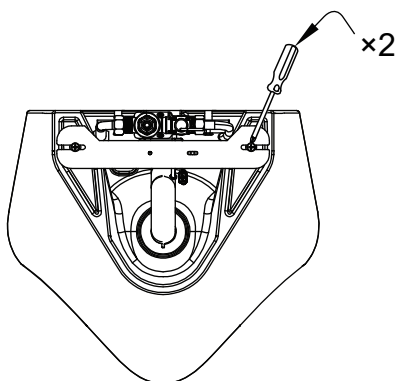


16a

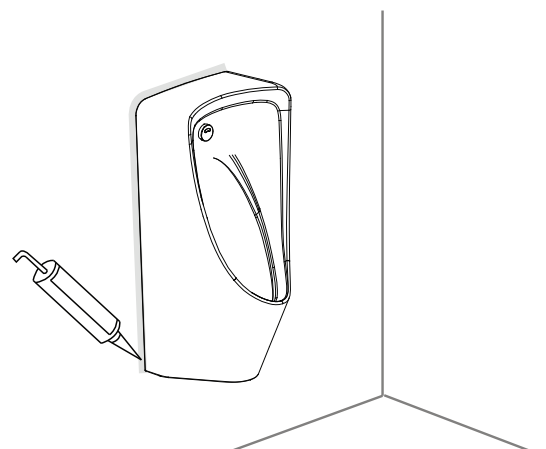
CCAS6519-3120410



16b




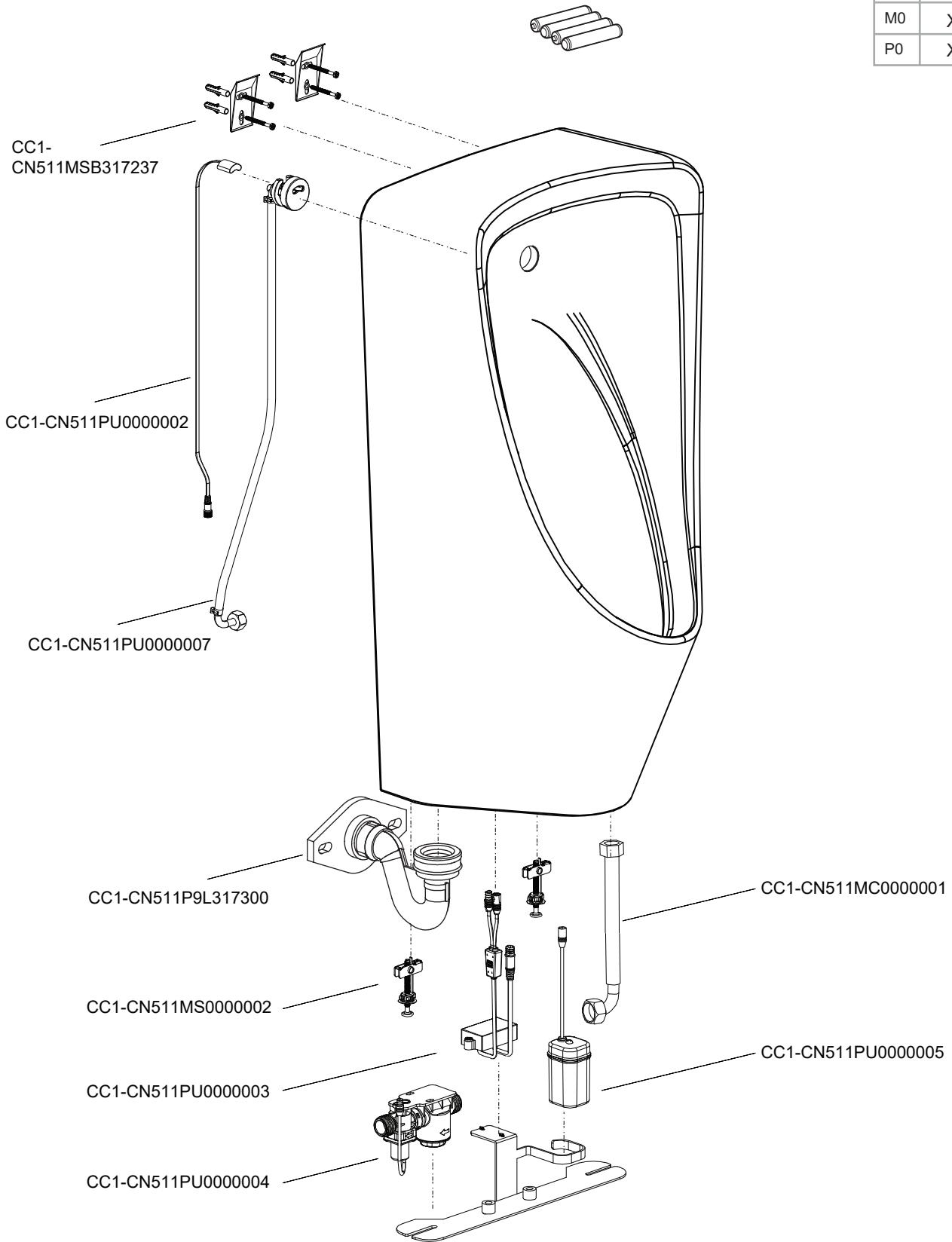
17



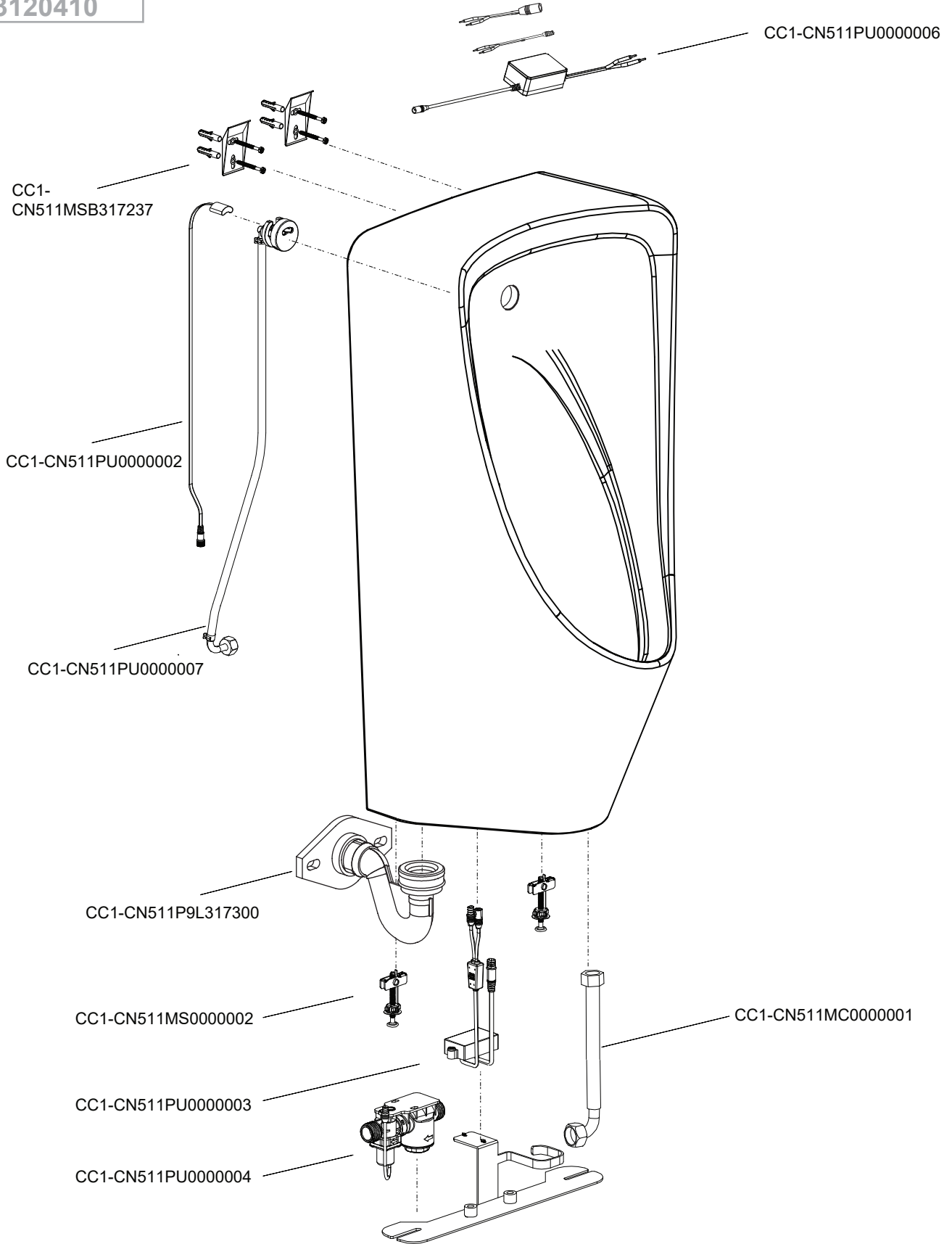
18

CCAS6519-
3110410

	
C0	✓
F0	X
M0	X
P0	X



CCAS6519-
3120410



BEFORE YOU BEGIN

- We congratulate you for choosing the product. Read these Safety Precautions carefully to ensure correct installation.
- **IMPORTANT: ALL PLUMBING AND ELECTRICAL WIRING INSTALLATION MUST COMPLY IN STRICT ACCORDANCE WITH LOCAL CODES AND REGULATIONS.**
- Unpack the product and take a moment to check and ensure that there is no damage. Verify that you have all the necessary tools, fittings and connection hardware to complete the installation.
- **CAUTION: Risk of personal injury or product damage. Handle with care. Vitreous china products can break or chip if handled carelessly.**
- The pictures shown in this instruction booklet are for illustration purposes only. Colour of product and components may differ from pictures shown.

安装之前

- 感谢阁下选用我们的产品!为了有助于安装顺利进行,请您在开始安装之前仔细阅读此安装指南。
- **注意:全部排水及电子设备安装作业必须完全符合当地相关法律法规规定。**
- 打开产品包装后请您检查有无任何损坏。并请确认您已有全部安装必备的工具、配件及连接装置。
- **注意:小心轻放以避免产品损坏及人身伤害,尤其是陶瓷产品的破损造成人员受伤。**
- 本手册中的图片仅作为演示目的,图中产品和配件的颜色可能与实物不同。

NOTES

- Ensure that the plumbing area is clean and clear from all debris or materials that will cause blockage, like cigarette end, chewing, tissue etc.
- The vitreous china product is heavy and fragile. Be careful when handling so as to avoid damage or water leakage.
- Measurements in this manual is in Millimeters by default (if not indicated).
- The product has a stop valve included. Angle valve, silicone and the output extend cable of adapter are not provided in package, need customer prepare by themselves (the type of extend cable must be above 26AWG, the length is less than 3m).

⚠ Make sure the temperature of bathroom does not fall under 0°C. When the water freezes, it can break water supply pipe or flush system, and cause water leakage or malfunction.

⚠ Ensure the sensor window is kept clean and free of dust before switching on power supply.

⚠ Ensure the good flushing performance, recommended working pressure is 0.17~0.55Mpa.

注意

- 请不要向小便斗内丢入烟头、口香糖、纸巾等容易堵塞的物品。
- 釉面陶瓷产品重且易碎,请轻拿轻放以防产品破损、漏水。
- 本手册中的尺寸如未标注单位,均默认为毫米。
- 本产品自带截止阀。角阀、硅胶、交流适配器的直流输出延长线需客户自备(延长线规格需26AWG以上,长度不超过3米)。

⚠ 卫生间应保持不低于0°C的室温。若水冻结可能使排水管或主体破损导致漏水或故障。

⚠ 上电之前,感应窗口前方感应区域内请保持干净。

⚠ 为保证良好的冲洗效果,推荐使用压力0.17~0.55Mpa。

CODE LIST

DC CODE : **CCAS6519-3110410C0**

AC CODE : **CCAS6519-3120410C0**

Water consumption: 0.5L

Water efficiency grade: 1 Grade

Standard: GB28377-2019

型号清单

直流型号: **CCAS6519-3110410C0**

交流型号: **CCAS6519-3120410C0**

用水量: 0.5升

额定用水效率等级: 1级

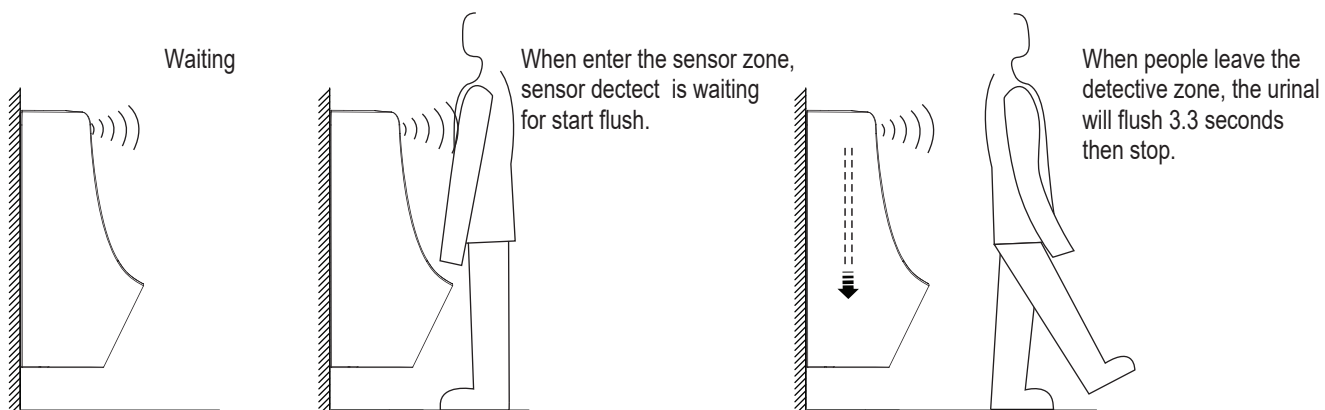
标准号: GB28377-2019

Specification	
Power Supply	DC6V 4pcs 1.5V AA Alkaline Battery / AC 100V~240V, 50/60Hz
Mode of the inducing Detects	Infrared Induction
Sensor distance range(default)	Adjustment range 20cm~75cm (30x30cm white board), the sensor distance will be changed according to different color and material. Preset 70±5cm (30 x 30cm white color board)
Starting Pressure	0.05Mpa(dynamic pressure) ~ 0.75Mpa(static pressure)
Pipe Size	G 1/2"
Environment Temperature	1°C ~ 55°C
Acceptable Water Temperature	1°C ~ 45°C
Detect Time	3 Seconds
Flush Time	one-time flush about 3.3s (after usage)
Flush Volume	≤0.5L (Static 0.17MPa and 0.55MPa average value)
Environment Protect	Urinal will flush once after idling for 24 hours
Stadium Mode	If the usage frequency of the urinal is high (i.e. less than 2 seconds interval between users), the urinal will flush once every 2minutes instead.

规格	
电源	直流DC6V 4节1.5V AA碱性电池 / 交流AC 100V~ 240V, 50/60Hz
感应控制方式	红外线感应
感应距离范围（默认）	可调范围20~75cm（30x30cm白板），对不同颜色和材料物体，感应距离可能会有差异。 出厂设定：70±5cm（30x30cm白板）
启动压力	0.05Mpa（动压）~ 0.75Mpa（静压）
供水管直径	G 1/2"
环境温度	1°C ~ 55°C
使用水温	1°C ~ 45°C
检测时间	3秒
冲洗时间	一段式 约3.3秒
冲洗水量	≤0.5L(静压0.17MPa和0.55MPa水压下测试的平均值)
除臭强制冲洗模式	24小时无人使用时自动冲洗一次
排队冲洗模式	使用时间间隔小于2秒，每隔2分钟，冲洗一次

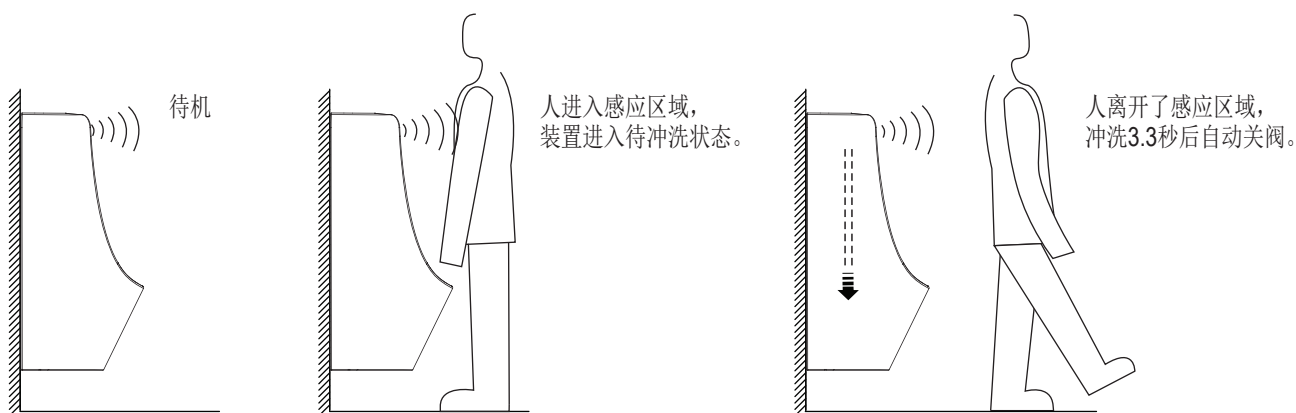
Test

- 1.Ensure both power and water supplies are connected.
- 2.Turn on the water supply, and make sure there are no leakages.
- 3.Stand within the sensor zone for 3s for sensor to detect user. Flushing will commence 2s after user leaves position and flushing will last 3.3s.
- 4.Once steps 1 to 3 are completed, the urinal is in good working order.



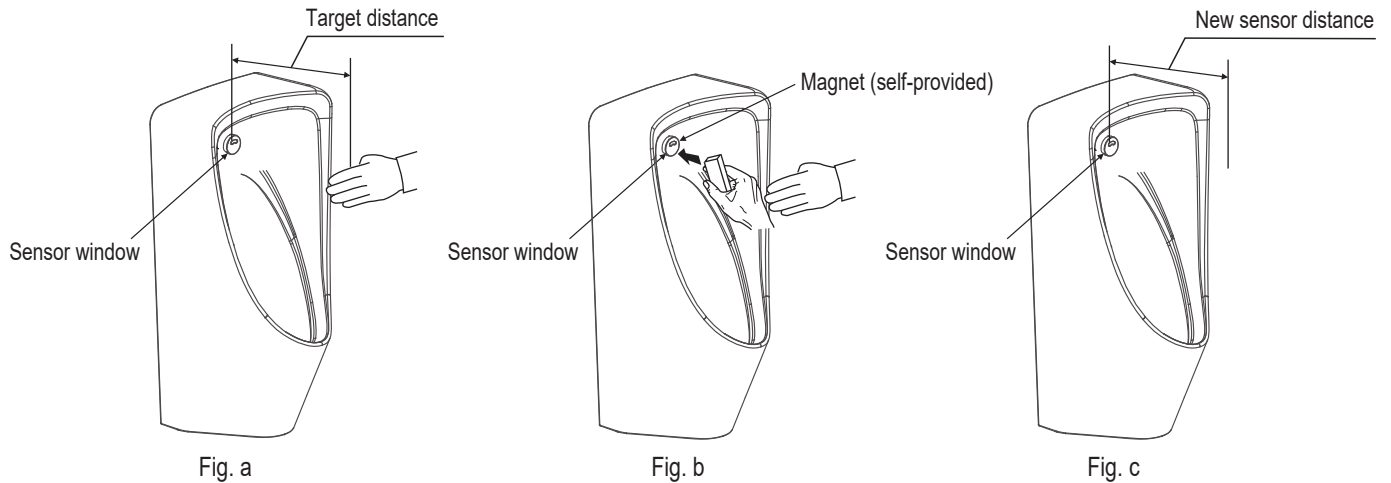
测试

1. 确保电源和供水已接好；
2. 开启供水，确认各连接处无渗漏；
3. 当人进入感应区域，装置进入待冲洗状态，等待至少3s，人离开了感应区域2s后，自动开阀冲洗3.3秒后自动关阀。
4. 完成第一至第三步，小便斗可以正常使用。



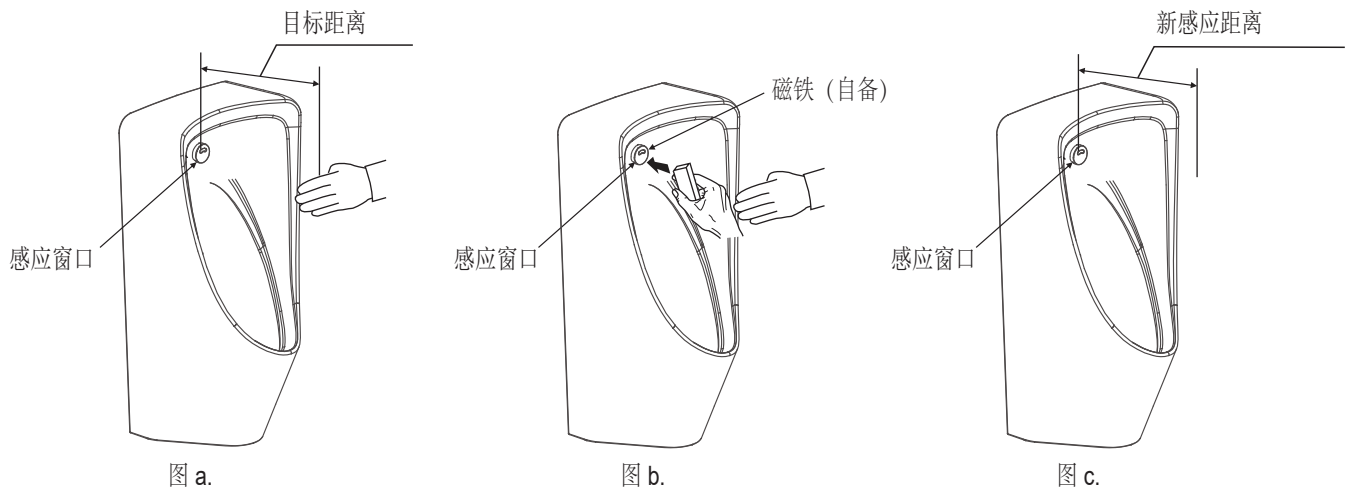
Sensor Zone Calibration (If required)

1. Sensor detection zone is set at $70\pm 5\text{cm}$ by default.
2. Place target or stand at the target distance. (See Fig.a)
3. Place magnet near sensor window until the red LED starts flashing. (See Fig.b)
4. Remove magnet away from sensor window.
5. Remove target object, or stand away from sensor detection zone once red LED stops flashing.
6. New sensor distance is successfully calibrated. (See Fig.c)



感应距离调节（如果需要）

1. 感应距离默认为 $70\pm 5\text{cm}$ ；
2. 将目标物体放置于目标距离处或人站立在目标距离的位置；（见图a.）
3. 将磁铁（用户自备）靠近感应窗口直至红色LED灯开始闪烁；（见图b.）
4. 将磁铁移开感应窗口；
5. 等待红色LED灯停止闪烁，即可把目标物体移开感应范围或人从感应区域走开；
6. 新的感应距离已成功设定；（见图c.）



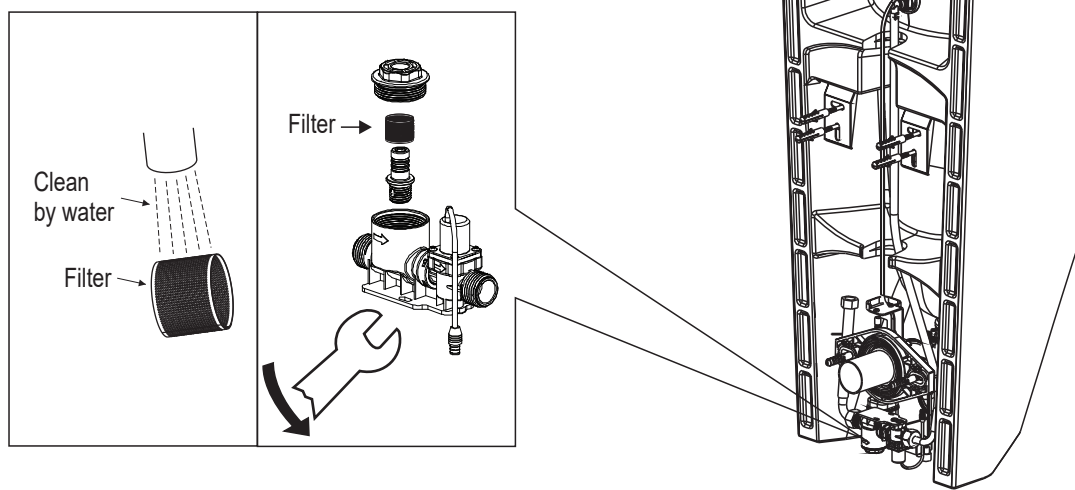
Trouble shooting		
Problems	Possible reasons	Instruction for solving
No Detection No Flush	a. (DC Version) No battery/battery installed reversely/ battery cable is not connected correctly b. (AC Version) AC input is not connected correctly/ DC output is not connected correctly c. An object might be placed within sensor detection zone causing sensor to be engaged d. Sensor window is dirty e. Red LED blinks continuously caused by low battery or the AC electricity is cut off	a. (DC Version) Check the battery and cable is connected correctly b. (AC Version) Check the connections of AC input and DC output c. Remove object from sensor zone d. Clean the sensor window e. Change battery or wait for power supply restoration
Detect But No Flush	a. The stop valve is closed b. An object might placed within the sensor detection zone causing the sensor to be engaged and unable to detect user has left c. Sensor window is dirty	a. Open the stop valve b. Clear the object away from the sensor detection zone c. Clean the sensor window
Low Flush Volume	a. The stop valve is not open entirely b. The filters are blocked c. Low water pressure d. Water flow is disrupted due to twisted or dented water pipes	a. Open the stop valve entirely b. Clean the filters c. Check with local water supply department d. Check and make sure water pipe is not dented or damaged
Non-Stop Flushing	a. Battery run out b. The cables are cut off c. The solenoid and diaphragm is blocked	a. Check the battery b. Check the cables and the connection c. Clean the solenoid and the diaphragm

一般故障排除指南		
现象	可能原因	处理方法
无感应 不出水	a. 电池盒内无电池/电池正负极装反/电池线未正确连接 (直流版本) b. 交流适配器输入线未正确连接/输出线未正确连接/输出 线正负极接反(交流版本) c. 感应区域内有其它物体阻挡 d. 感应器窗口有脏物 e. 电池电量不足导致指示灯连续闪烁或交流电停电	a. 确认电池正确装好/连接器正确插好(直流版本) b. 确认交流适配器输入线连接好/输出线正确连接好 (交流版本) c. 清理感应区域内的其它物体 d. 清洁感应器窗口 e. 请更换电池/等待交流电源恢复供电
有感应 不出水	a. 截止阀未打开 b. 感应区域内有其它物体阻挡 c. 感应器窗口有脏物	a. 打开截止阀 b. 清理感应区域内的其它物体 c. 清洁感应器窗口
出水量少	a. 截止阀未完全打开 b. 过滤装置堵塞 c. 水压太低 d. 水管扭曲或受压变形	a. 将截止阀完全打开 b. 清洗过滤装置 c. 联系供水部门 d. 梳理水管, 保持水路通畅
冲水不停止	a. 电池电量用完 b. 连接线路出现故障 c. 电磁阀膜片堵塞	a. 更换新电池 b. 检查各连接线路 c. 清洗膜片

Maintenance & Repair

The Stop Valve of this sensor faucet is equipped with a good quality filter, but the impurity of water or water pipe will affect the water flow. If water flow is affected, you should clean the filter with the following steps (If you can turn off the water supply before performing the following steps by your own way, you can skip the step 2&5, and don't forget to turn on the water supply when finished):

1. Take off the flush valve assembly by loosen the screws at the bottom of the urinal.
2. Use hex wrench to close stop valve clockwise until it can't spin, then the water supply is turned off.
3. Use monkey wrench or other opening tools to screw out the stop valve cap.
4. Pull out the Filter to clean out dirt and blockages and place it back in, then screw back the stop valve cap.
5. Use hex wrench to open stop valve counterclockwise entirely, then the water supply is turned on.
6. Fix the flush valve assembly back on the urinal.



维护与保养

此感应冲洗阀的专用止水阀已配置了优良的过滤装置；但如果管道内杂质较多或水质较差，长期使用会有污垢聚集而引起出水不良；此时应清洗过滤装置，具体步骤如下（若用户可以自行在执行以下步骤之前关闭系统供水，则以下第2步和第5步可以跳过，并且记得在完成之后开启供水）：

1. 松开陶瓷底部固定螺丝，取下冲洗阀组件；
2. 用内六角扳手顺时针旋转截止阀到底，关闭供水系统；
3. 用扳手旋出过滤阀的上盖螺母；
4. 小心地取出过滤网，用清水冲洗干净后重新装回，再旋紧上盖螺母；
5. 用内六角扳手逆时针彻底打开截止阀，开启供水系统；
6. 将冲洗阀组件重新装回陶瓷底部。

