

Concept D Shape

Wall Hung Lavatory

TF-0553



FEATURES

- Easy to clean
- Overflow hole on back position

SPECIFICATIONS

- Faucet Drillings: Single / T4" / T8"
- Basin Dimensions: W460*L550*H150 mm.
- Material: Vitreous China

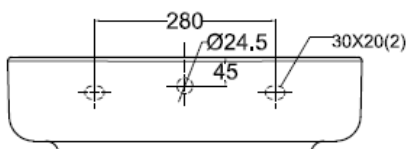
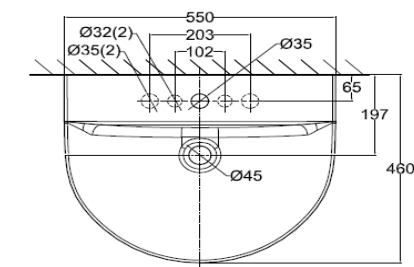
COLOR AVAILABILITY

- White (WT)

INCLUDED COMPONENTS

- Overflow ring
- Wall Fixing
- Installation manual

DIMENSIONAL DRAWING



SHIPPING WEIGHT

- Net Weight: 15.89 KGs.
- Gross Weight: 18 KGs

STANDARDS CRITERIA

- TIS Standard
- EN Standard
- ASME Standard

