

Acacia Evolution

Concealed Shower Mixing Valve With Universal Installation Box

WF-1322.709.50



FEATURES

- Modern design that can fit with any style of bathroom
- Ceramic disc valve for a life time use
- Strong brass construction
- Nickel and chromium plating for durable finish
- With 2-way Diverter for Spout and Shower Head
- Without Shower Kits
- Flow Rate @ 0.1 MPa (W/o Shower) : 16.68 L/Min
- Included Universal Installation Box (WF-0625.000.99)

SPECIFICATIONS

- Concealed Shower Mixing Valve
- In-Wall Installation
- Plate Dimension : 150x150 mm

FINISHES AVAILABILITY

- Chrome (- CP)

AWARDS WON

- N/A

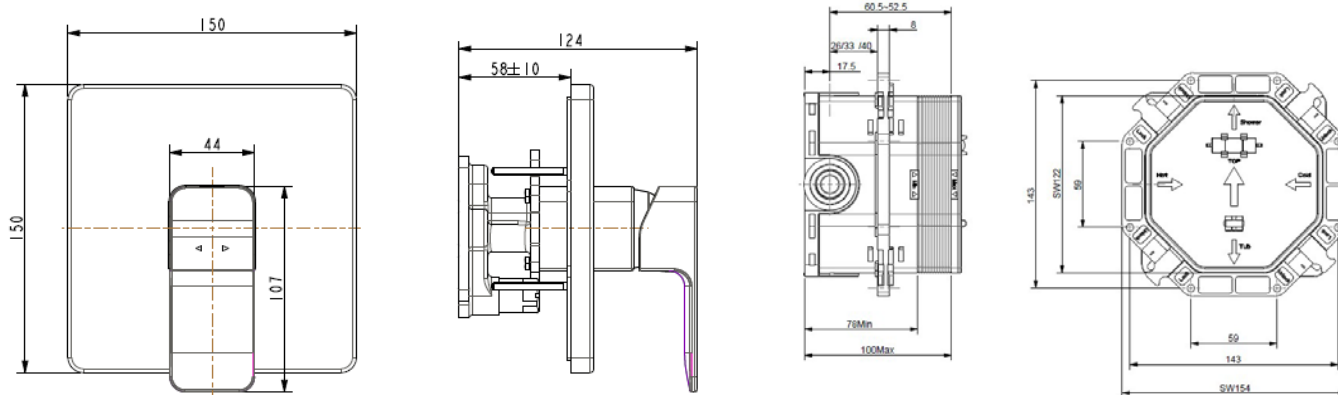
SHIPPING WEIGHT

- Product weight: 1.40 kg

STANDARDS CRITERIA

- GB 18145-2014

DIMENSIONAL DRAWING



Universal Installation Box