

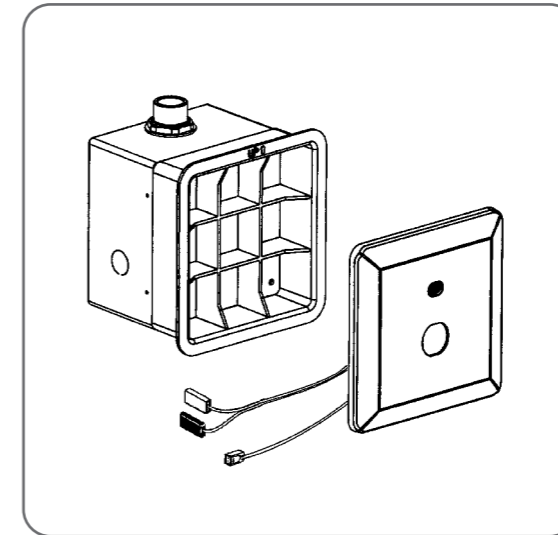
Thank you for selecting American-Standard - the benchmark of fine quality for over 100 years.
To ensure that your installation proceeds smoothly--please read these instructions carefully before you begin.

American Standard

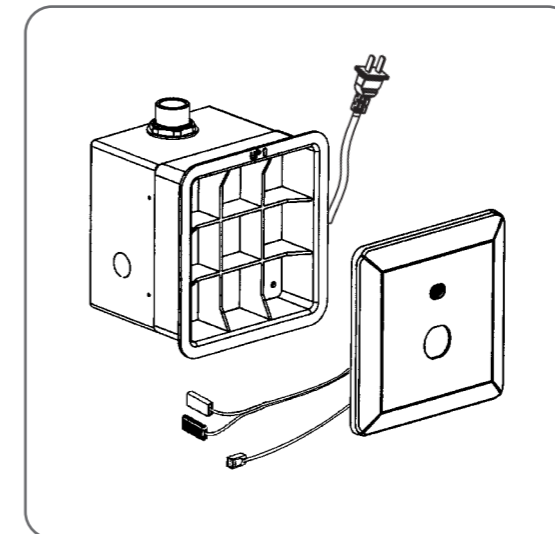
ROUBLE SHOOTING

Problem	Reason	Correction
No Detection No Flow	No battery or the battery installed wrong and no power supply Something around the sensor is detected all the time Sensor window is dirty The connection is not connected correctly	Install battery and connection power supply Clean the things around the sensor Clean the sensor window Check the connection
Has detection but no flow	Just finished installation The stop valve is closed Somethings around the sensor is detected all the time Sensor window is dirty	Wait for 10 minutes Open the stop valve Remove somethings around the sensor Clean the window
Low water flow	The stop valve is not open entirely The filters are blocked Low water pressure	Open the stop valve entirely Clean the filters Contact with water supply department
Water flow nonstop	Somethings around the sensor is detected all the time The water flow last for a long time	Remove somethings around the sensor Close the supply valve or wait for 1 minute


Installation & Operation Instruction



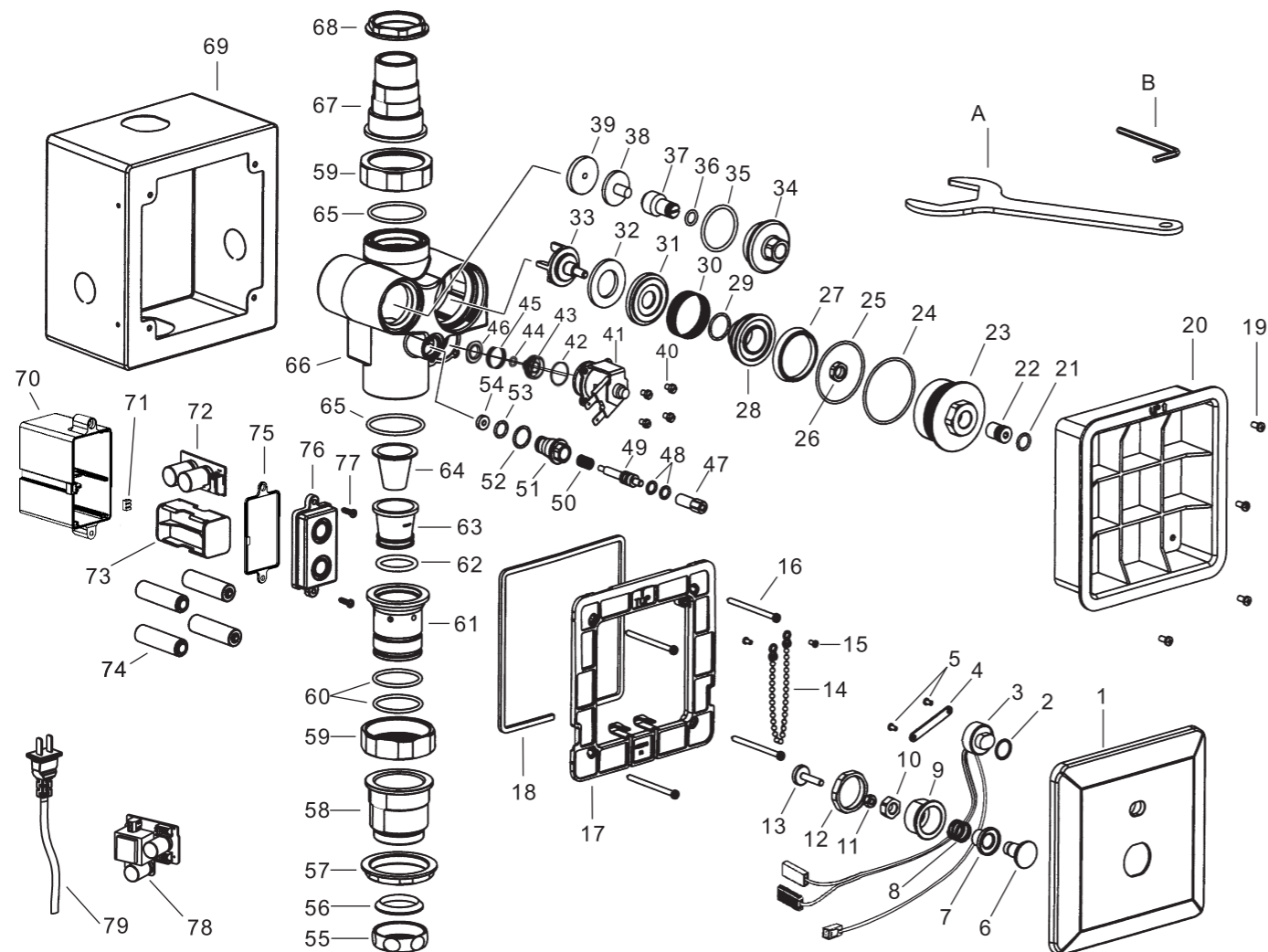
WF-8603.000.XX
Senseflow Concealed Toilet Flush Sensor Flush Valve,DC



WF-8613.000.XX
Senseflow Concealed Toilet Flush Sensor Flush Valve,AC
WF-8613.0W0.XX
Senseflow Concealed Toilet Flush Sensor Flush Valve, (110V AC)

 **Attention Installer:**
Leave this information to the customer
after installation is completed

Parts List

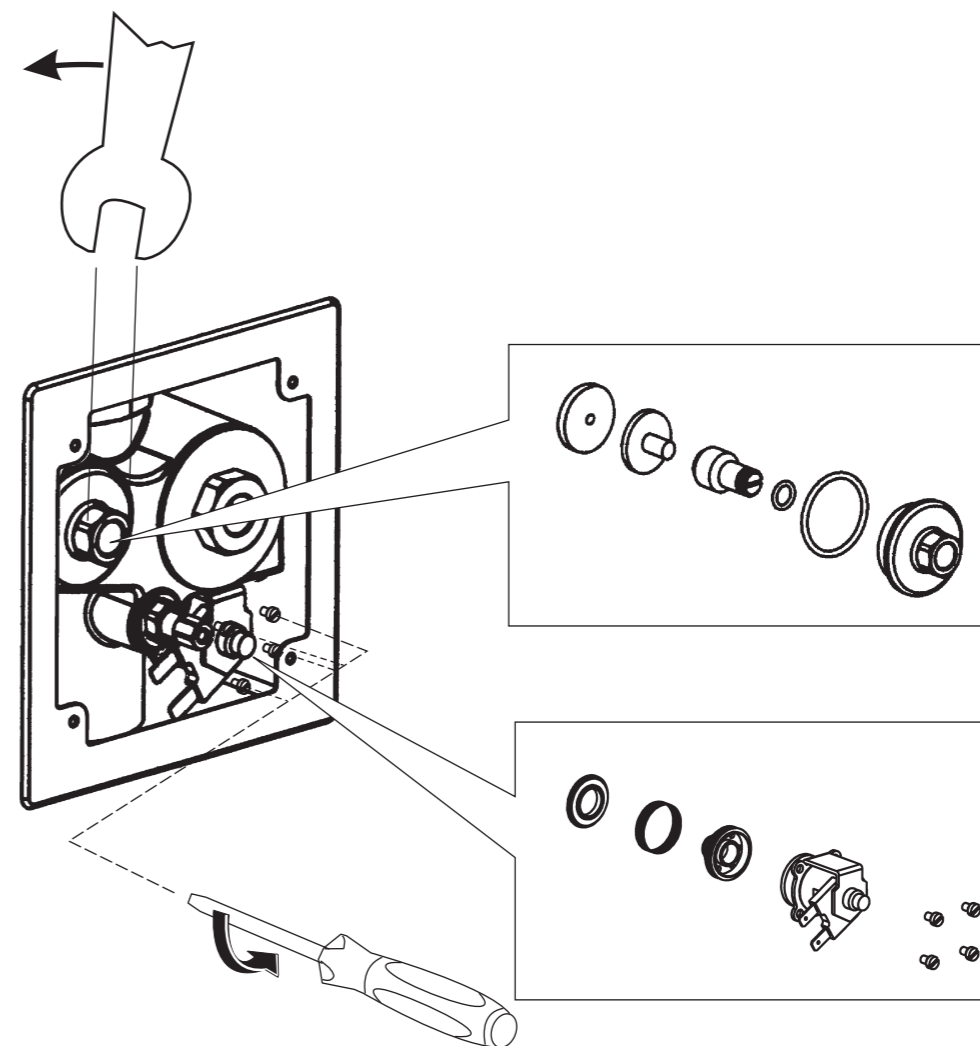


No.	Part Noame	Q'ty		No.	Part Noame	Q'ty		No.	Part Noame	Q'ty	
		8603	8613			8603	8613			8603	8613
1	Panel	1	1	27	Washer	1	1	53	O-Ring	1	1
2	O-Ring	1	1	28	Control Valve	1	1	54	Washer	1	1
3	Sensor	1	1	29	O-Ring	1	1	55	Nut	1	1
4	Peg Plank	1	1	30	Filter	1	1	56	Taper Gasket	1	1
5	Screw	2	2	31	Bottom Plate	1	1	57	Nut	1	1
6	Manual button	1	1	32	Washer	1	1	58	Housing	1	1
7	Holder	1	1	33	Valve Pedestal	1	1	59	Nut	2	2
8	Spring	1	1	34	Valve Cover	1	1	60	O-Ring	2	2
9	Housing	1	1	35	O-Ring	1	1	61	Housing	1	1
10	Nut	1	1	36	O-Ring	1	1	62	O-Ring	1	1
11	Nut(M5)	1	1	37	Lever	1	1	63	Holder	1	1
12	Screw	1	1	38	Stop	1	1	64	Check Valve	1	1
13	Pole	1	1	39	Washer	1	1	65	O-Ring	2	2
14	Chain	1	1	40	Screw	4	4	66	Control Valve Body	1	1
15	Screw	2	2	41	Solenoid Valve	1	1	67	Housing	1	1
16	Screw	4	4	42	O-Ring	1	1	68	Nut	1	1
17	Frame	1	1	43	Control Valve	1	1	69	Box Body	1	1
18	Washer	1	1	44	O-Ring	1	1	70	Battery Box Body	1	1
19	Screw	4	4	45	Filter	1	1	71	Washer	1	1
20	Plaster Guard	1	1	46	Washer	1	1	72	Circuit Board (DC)	1	0
21	O-Ring	1	1	47	Sleeve	1	1	73	Battery Box	1	0
22	Lever	1	1	48	O-Ring	2	2	74	Battery (AA)	4	0
23	Valve Cover	1	1	49	Lever	1	1	75	Washer	1	1
24	O-Ring	1	1	50	Spring	1	1	76	Battery Box Cover	1	1
25	O-Ring	1	1	51	Housing	1	1	77	Screw	3	3
26	Nut	1	1	52	O-Ring	1	1	78	Circuit Board(AC)	0	1
								79	Power Line	0	1

Maintenance & Repair

The stop valve may be block. Please. Follow below steps for maintenancing and repairing.

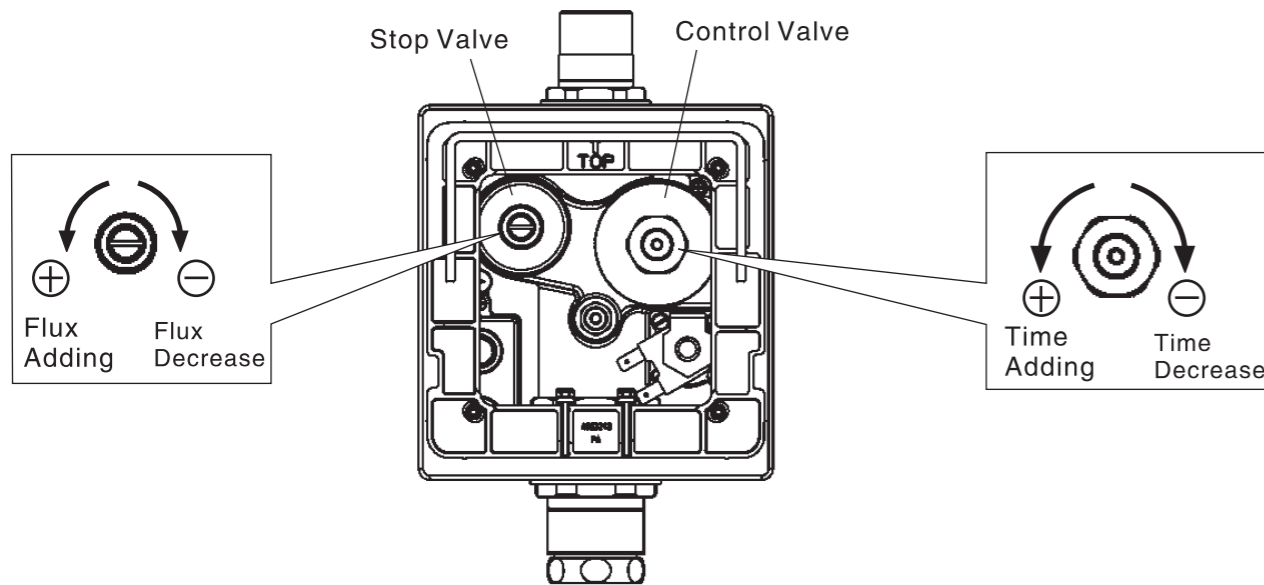
1. Cut off from the Water Supply.
2. Open the stop valve & Solenoid Valve for maintenancing and repairing.
3. Then it resumes to work.



Caution

- 1). Water source for the faucet should be drinking water.
Water forbidden to supply: seawater.
- 2). Knocking on the main component is not allowed.
- 3). Strong sunlight should be avoided to irradiate the sensor window directly.
- 4). Keep the sensor window clean. Knocking on it is not allowed.
- 5). The sensor window should be cleaned with neutral detergent or soft cloth.
- 6). Organic solvent shouldn't spray directly to the sensor window.

Stop Valve & Control Valve the Regulate



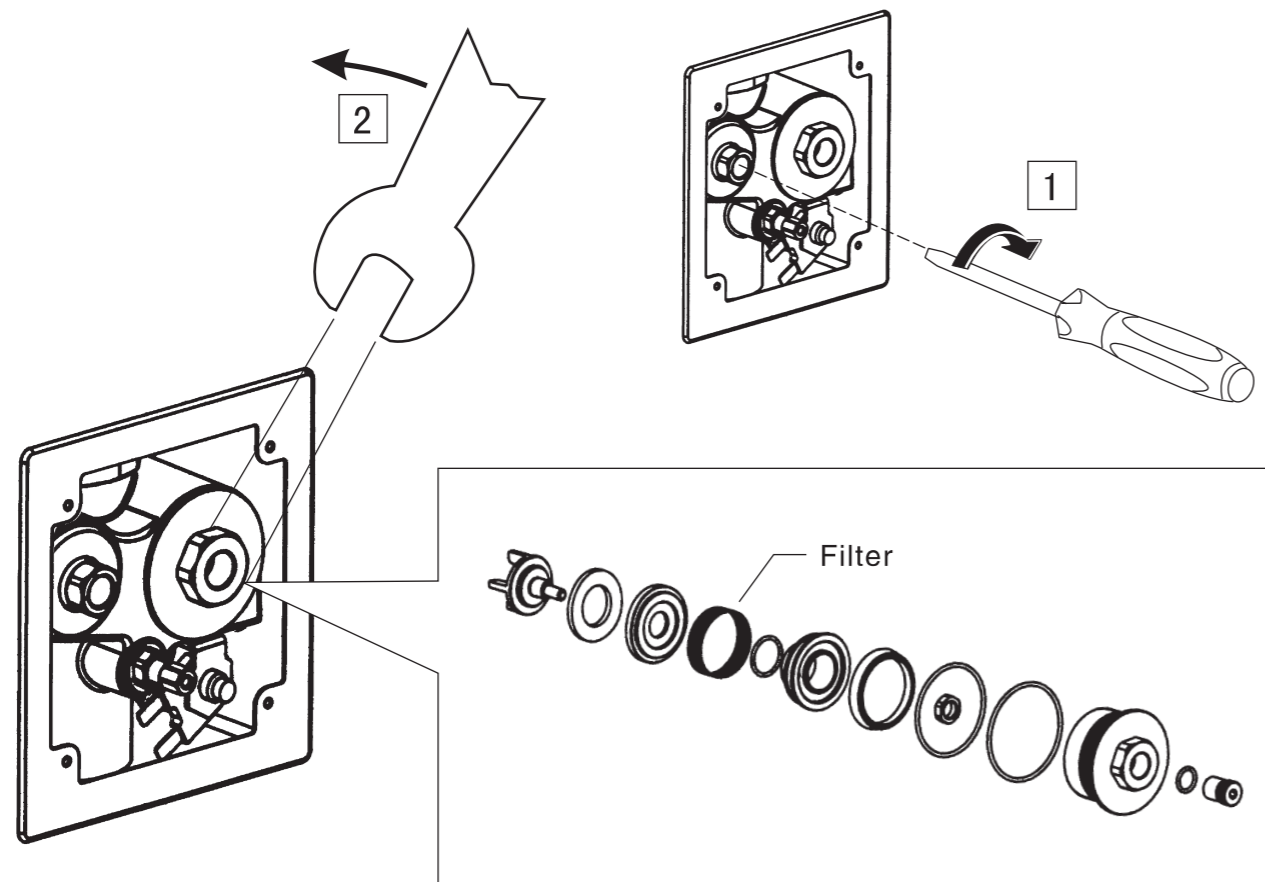
Replace the Battery

When the battery use out, the LED will keep blanking. You must replace the batteries.
(Please check the battery installation.)

Maintenance & Repair

The screen may be block by the dirty water. Then the flush valve must be repaired.

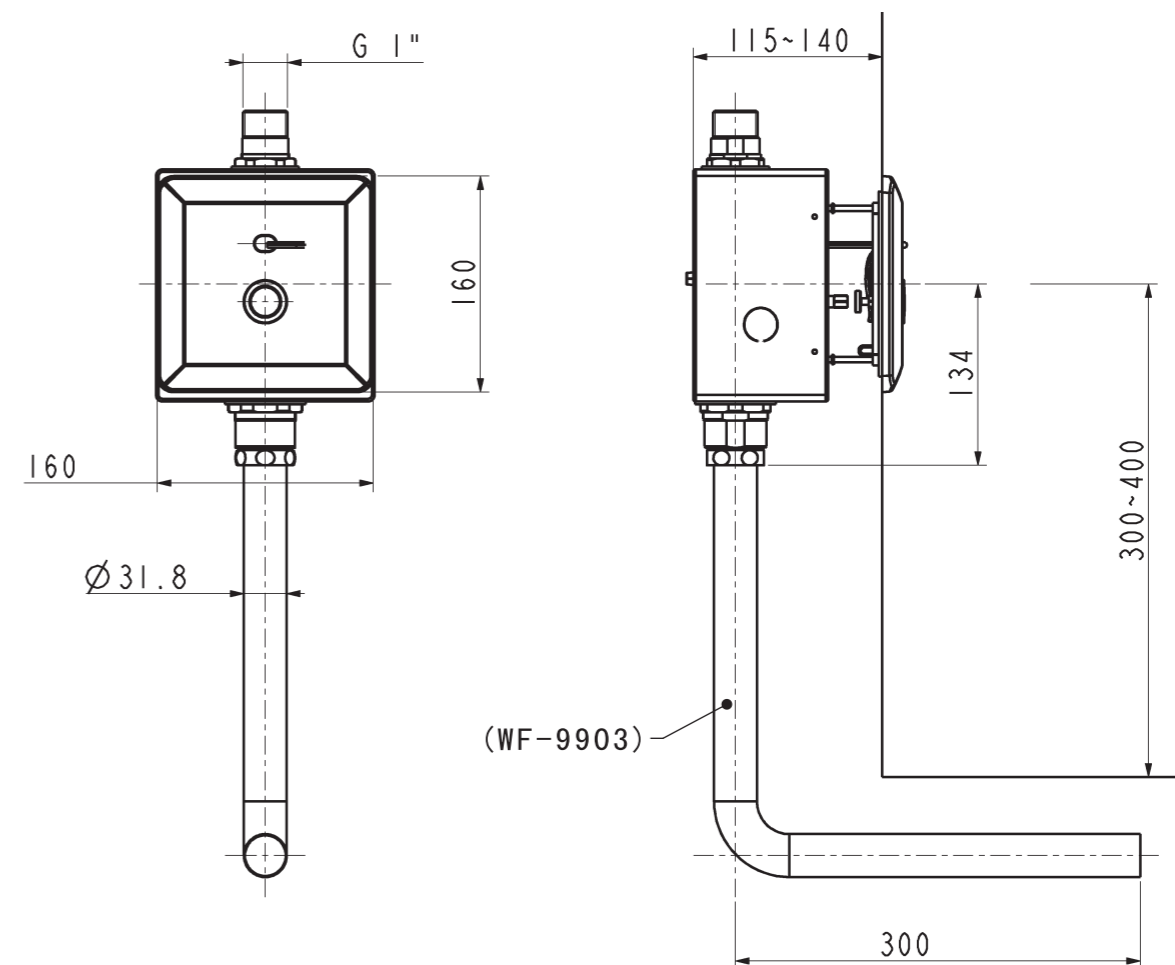
1. Please close the water system or close the stop valve before maintenance and repair the valve.
2. Open the control valve and clean the screen.



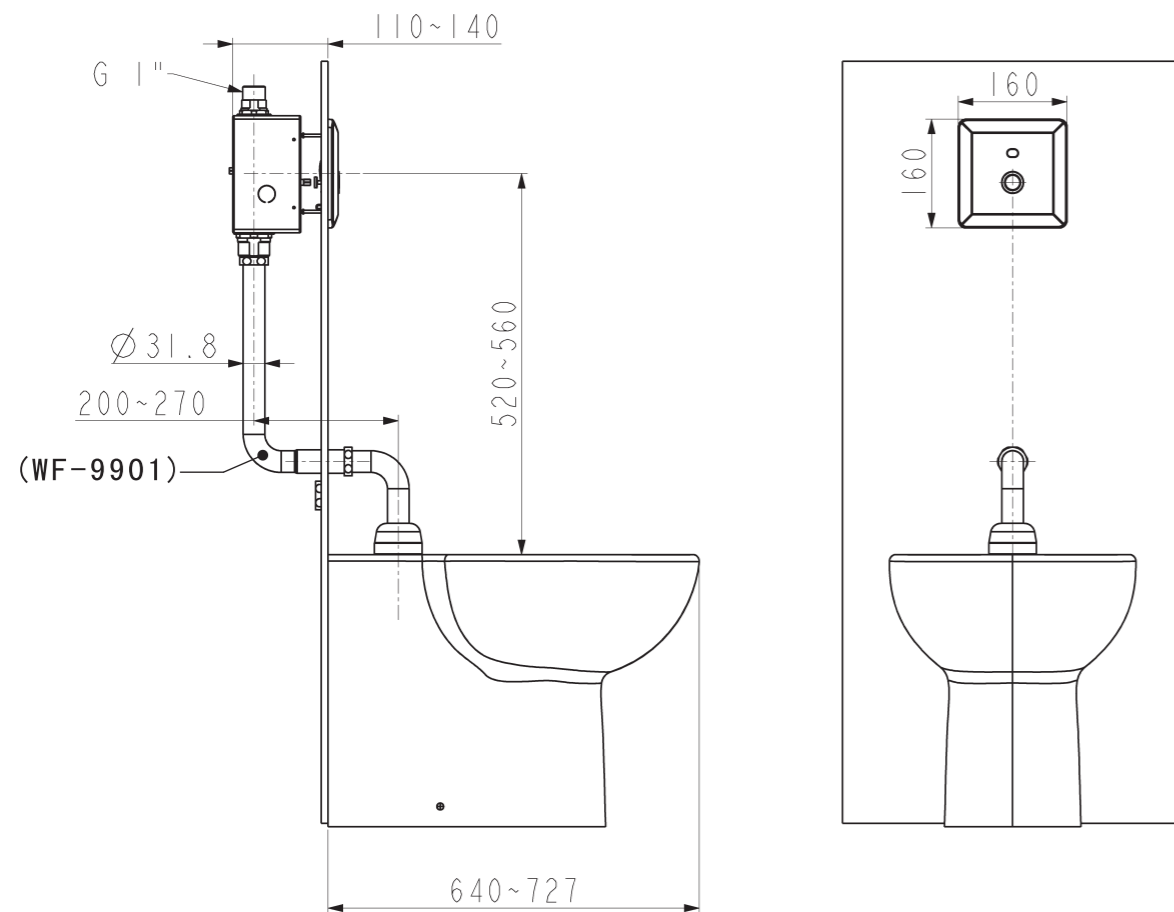
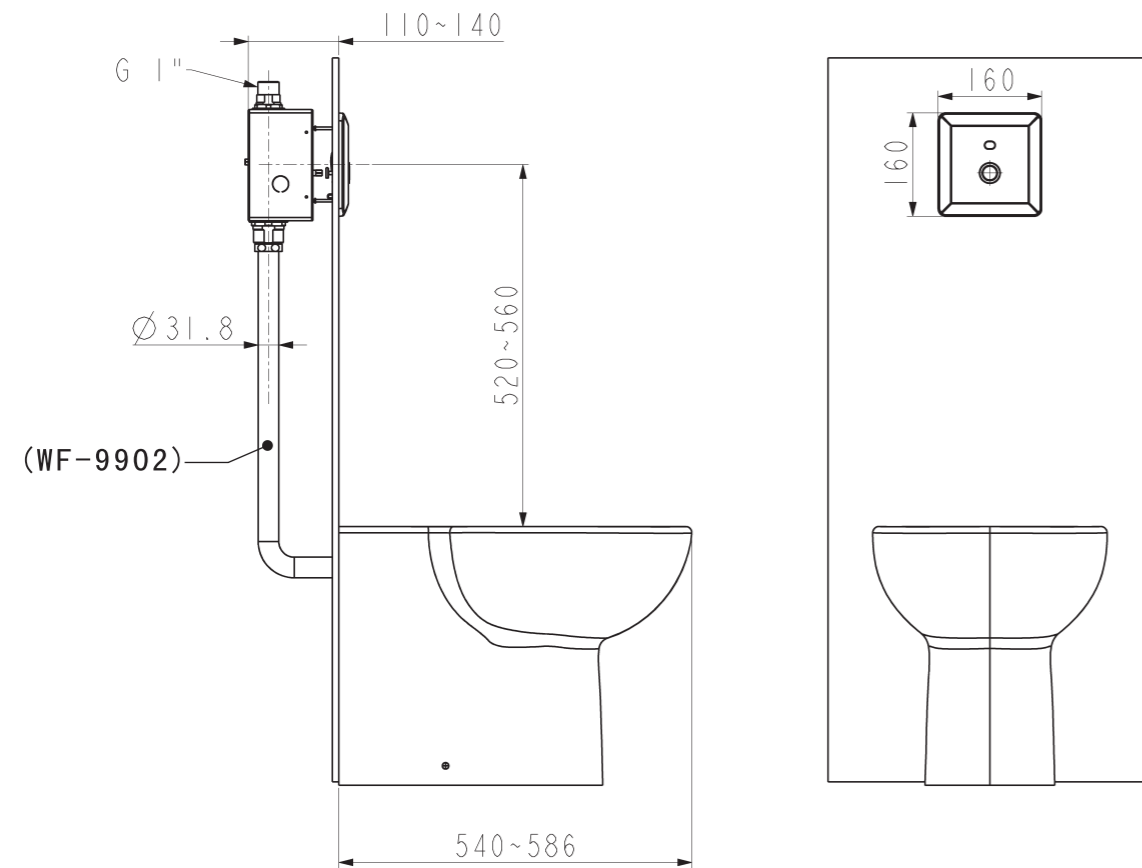
Specification

Proudct Code	WF-8603.000.XX (DC) -4Pcs 1.5V AA Alkaline Battery
	WF-8613.000.XX (AC) -165V ~ 275V
	WF-8613.0W0.XX (AC) -110V
Sensor Type	Infrared
Detect Distance	500mm~800mm (Preset 500mm)
Recommend Water Pressure	0.1 ~ 0.55Mpa (Internal Dimension Should be no less than 25mm)
Inlet Pipe	G 1"
Outlet Pipe	D31.8 Brass Tube
Flush Delay	5 Seconds After Leaving
Environment Temperature	1°C ~ 55°C
Working Temperature	1°C ~ 45°C
Detect Time	≥ 5 Seconds
Flush Time	3 ~ 10Seconds
Flush Volume	5 ~ 10L
Environment protection	With a Flush when 24 Hours with no detection

Dimension

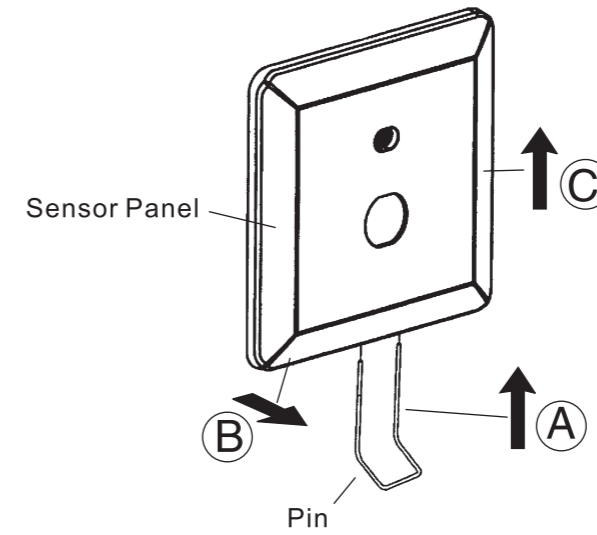


Dimension



Usage Instructions

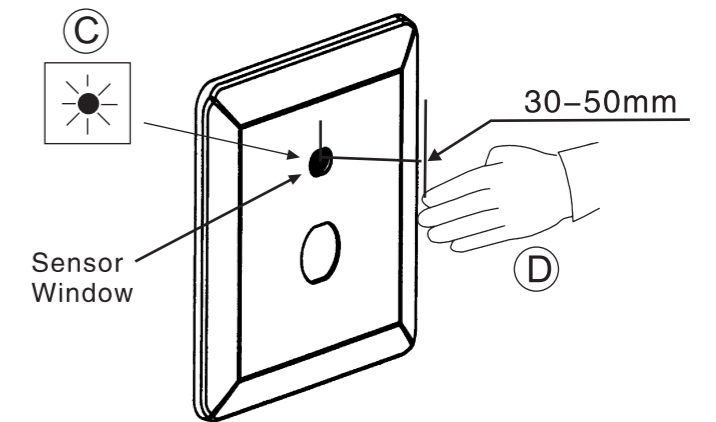
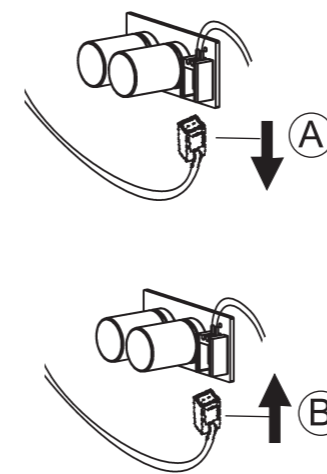
Open Sensor Panel



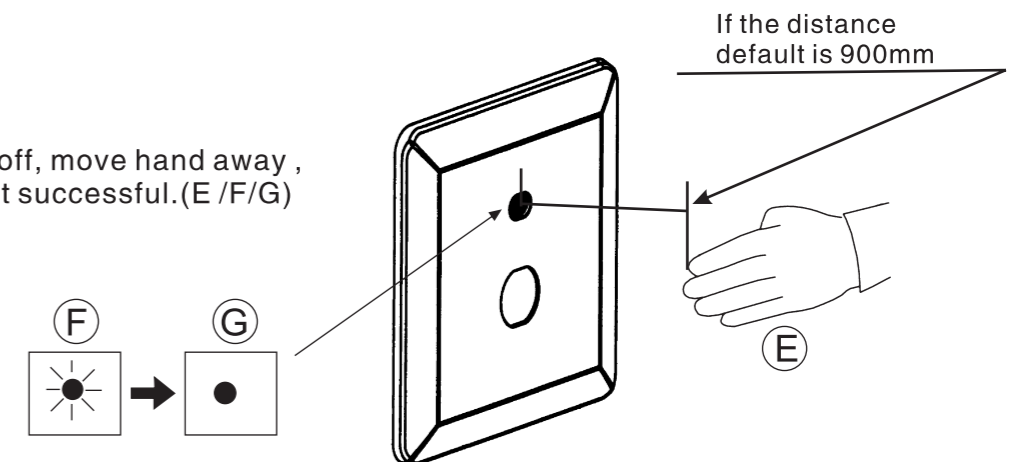
Detection Zone Adjust

1. Open the valve box, unplug signal wire from circuite board, wait for a moment than plug again. (A/B)

2. Put hand at the distance of 30~50mm in front of the sensor when the LED is blinking, move hand to the disdance you wish. (C/D)



3. When the LED turn off, move hand away , the range has been set successful.(E /F/G)



Check

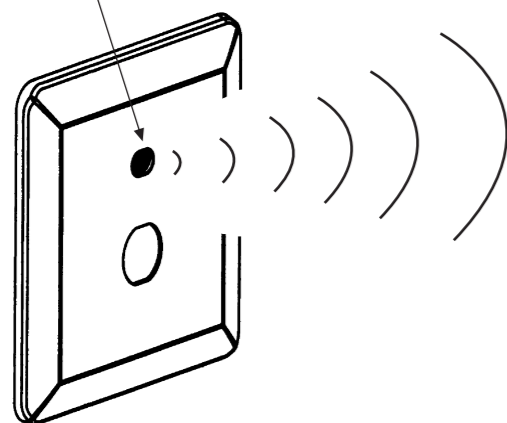
- *Make sure the connection is correct and with no leakage .
- *Take off the stick on the sensor window after finishing installtion

Note:

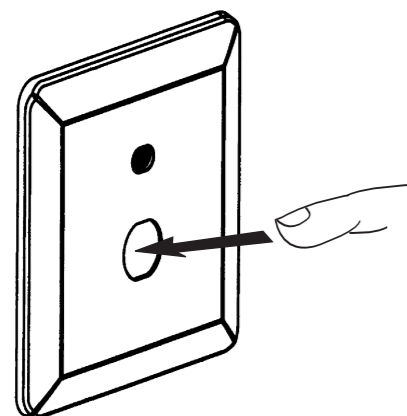
After taking off the stick ,everytime restart the power supply , nothing should be in fron of the sensor .

Usage

Sensor Window



The user goes into the detection , the flush will not flush until the user stay in the detection zone for more than 5 seconds then leaving from the detection zone for 5 seconds .



When the battery use out , push the button then the valve will flush .

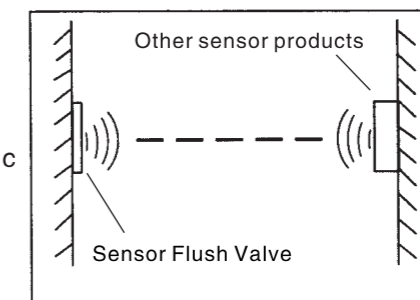
Caution

- * Remove all impurities in pipes before beginning to avoid clogging.
- * Check installation distances in the Dimension diagram to ensure correct installation.
- * To avoid surface damage by improper cleaning, please refer to attached care and Maintenance instruction.

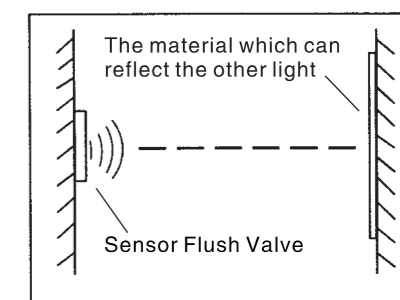
Working Condition:

- * Environment temperature: 1 ~ 55°C
- * Acceptable water temperature: 1 ~ 45°C
- * Available water pressure: 0.1 ~ 0.55Mpa

- *Do not install the urinal in a place which having other sensor opposite on the opposite position such as toilet automatic flush equipment.
- * Do not install the urinal in a place with any reflective object opposite, such as stainless steel.



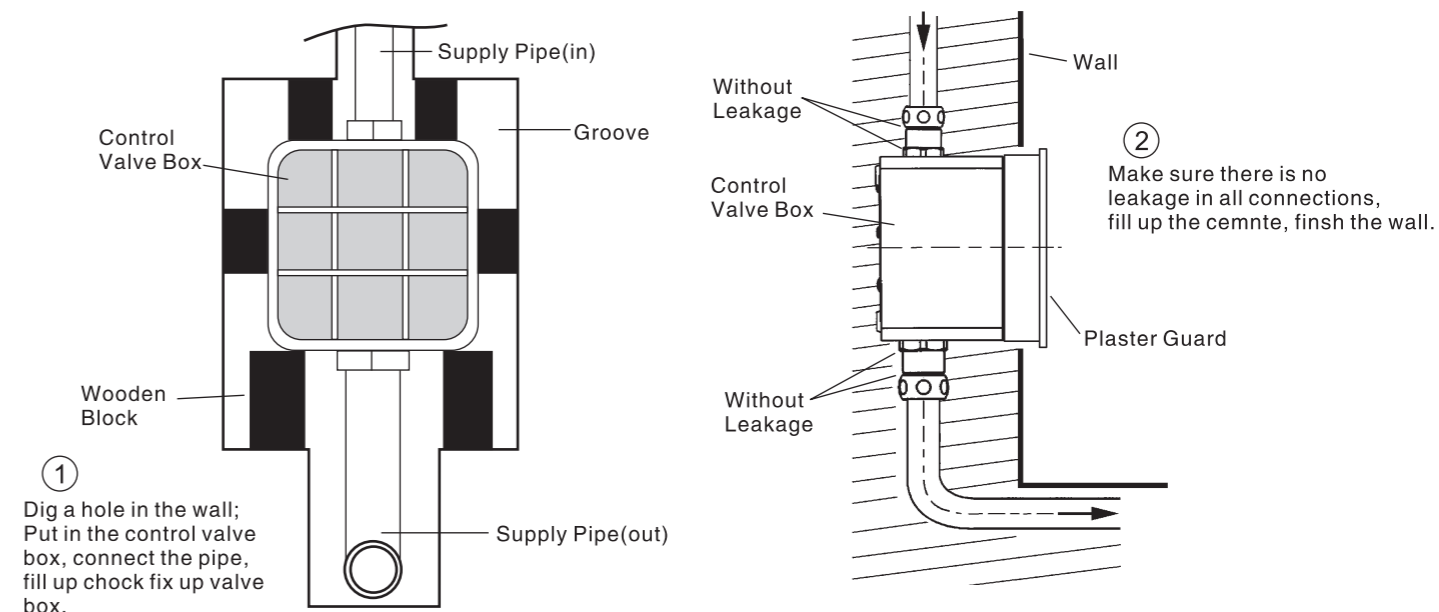
* The installstion is not correct



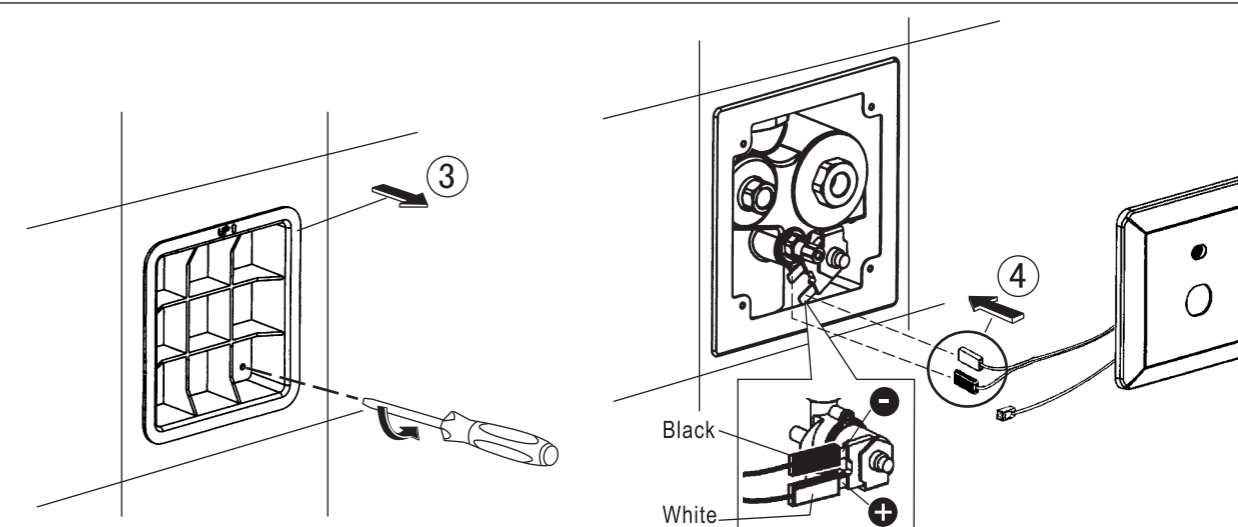
* The installstion is not correct

Install (Install Control Valve Box)

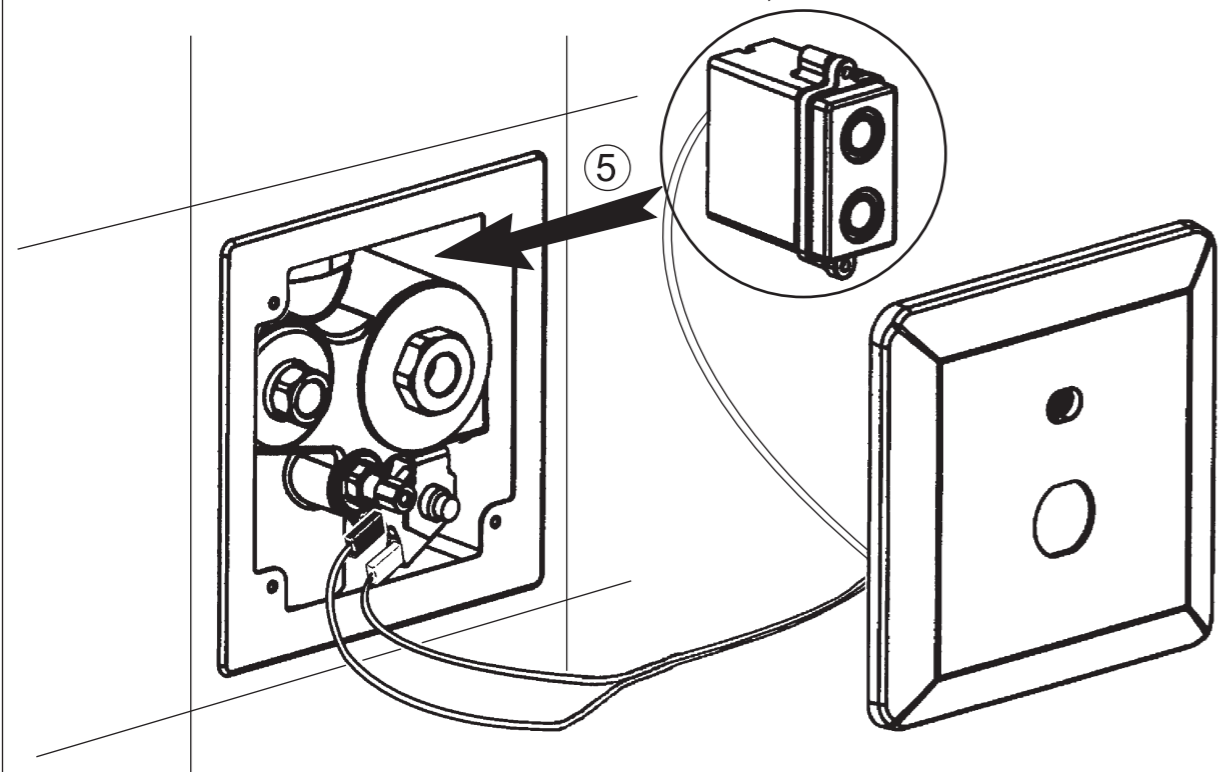
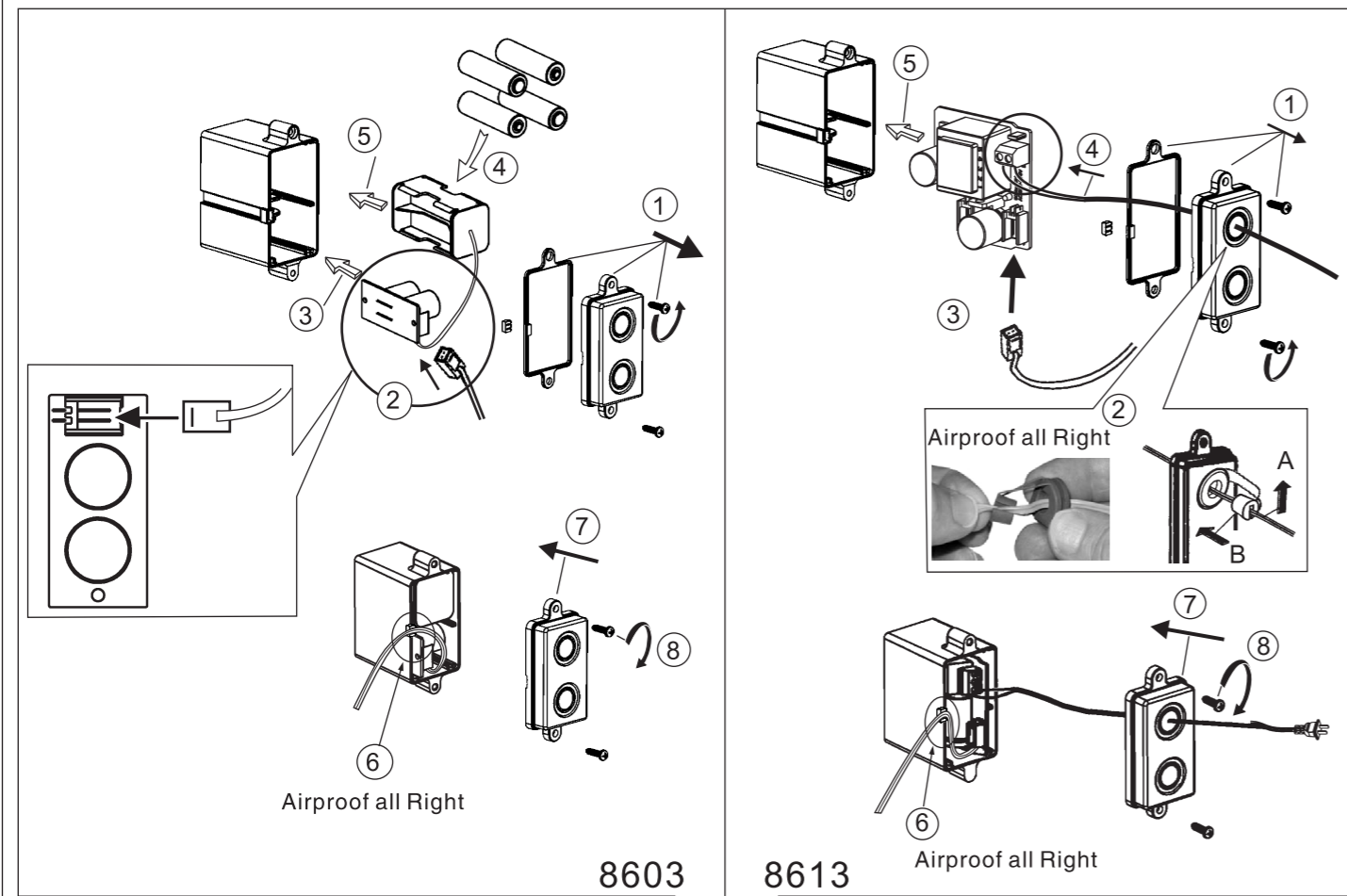
- * Chenk the install dimension befor setting the flush valve and the pipe that connect to the water supply .
- * The battery must be installed correctly . New battery can not be use with the old one .



Install (Take out the plaster guard, connect the solenoid valve the sensor)



Install (Install Battery Box)



When start the power, the LED in the soesor starts blanking. Nothing should be in fron of the sensee during the LED blanking in case of changing the default detection range.

Install (Install Sensor Panel)

