



Specifications

DESCRIPTION

- Metal construction with a chrome finish
- G1/2 quick inlet connections
- Thermostatic valve design and with three functions diverter cartridge
- 1500mm shower hose / single function handheld shower
- 1090mm shower bar direct connect to valve design
- Towel ring PJ66130 as the optional parts

OPERATION

- Round style handle with a knob
- Temperature lever operates through a 230 degree arc with maximum cold at full clockwise rotation and maximum hot at full counterclockwise rotation
- Press down Safety stop knob design preset temperature at 38° C
- Safety stop override allows maximum temperature at 49° C
- Factory established temperature range from 20° C to 49° C

CARTRIDGE

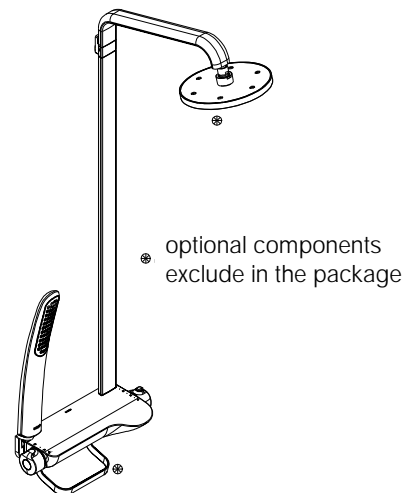
- 143910 thermostatic cartridge design with Nonmetallic / non-ferrous material

STANDARD

- Designed to meet QB2806 standard

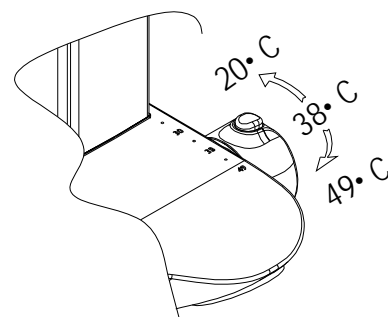
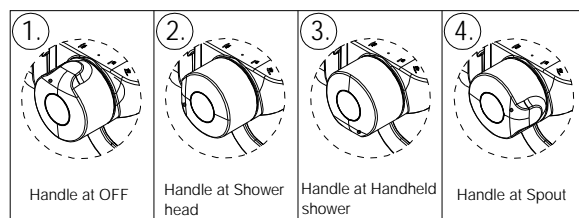
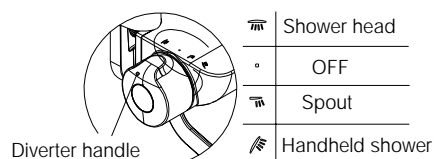
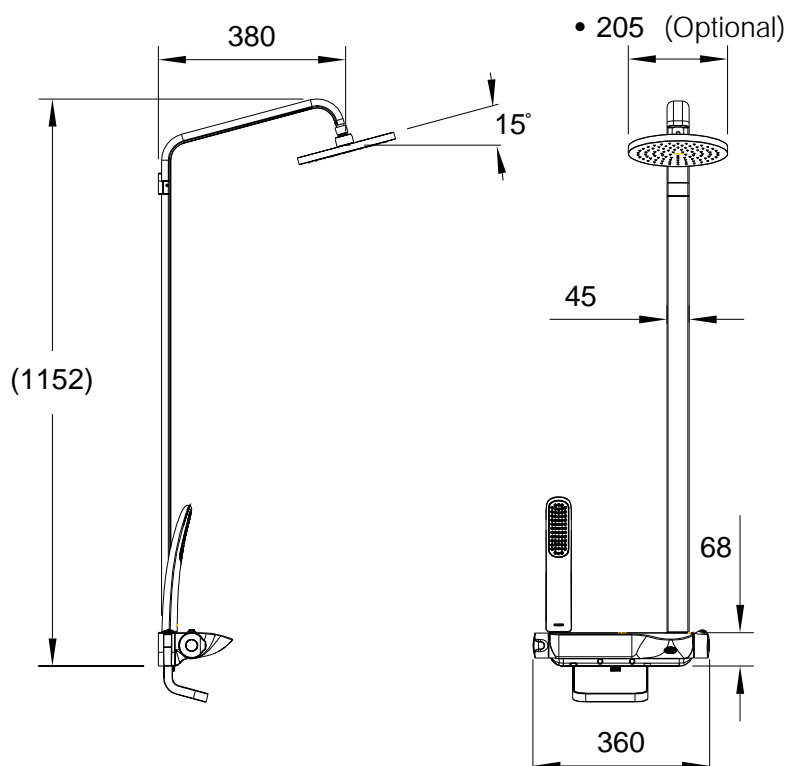
WARRANTY

- 5 years limited warranty against leaks and drips



Thermostatic
Two-Handle Wall Mount Bar Shower

Models: 66232



Factory established temperature range from normal temperature to 49° C; Safety stop preset temperature at 38° C;
1. Turn the handle clockwise, water temperature will turn to normal temperature from 38° C;
2. Press the button down and turn the handle anticlockwise, water temperature will go up to 49° C;

CRITICAL DIMENSION

(DO NOT SCALE)

Rev 04/02/2011