

MOEN® 摩恩

入墙式恒温花洒龙头面板组件

安装说明书

In-Wall Thermostatic Shower Panel Kit

INSTALLATION INSTRUCTIONS

如需安装支持，配件丢失或替换等，请联系本公司。
对于中国大陆以外的市场，请咨询当地经销商。
(中国大陆) 400-630-8866
(中国大陆) www.moen.cn
(中国大陆以外) www.moen.com.hk

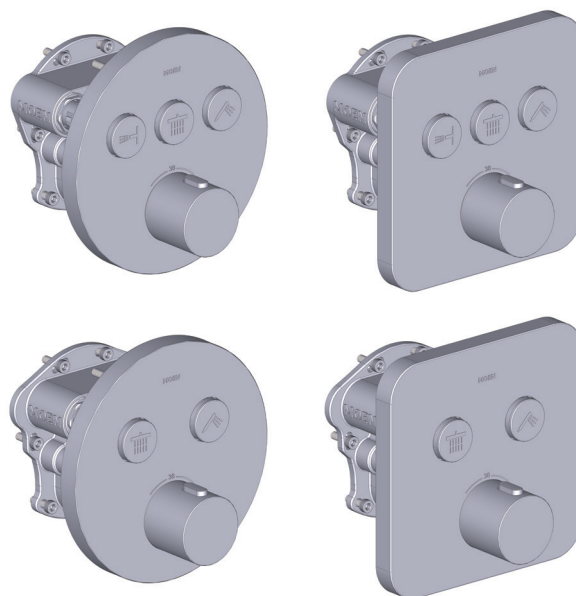
For installation support, missing or replacing parts, etc., please contact the company. For consumers in markets outside the Chinese mainland, please consult the local dealer.
(Chinese Mainland) 400-630-8866
(Chinese Mainland) www.moen.cn
(Outside Chinese Mainland) www.moen.com.hk

推荐工具

为了安全和让安装和替换变得容易，本公司建议您使用以下工具：

HELPFUL TOOLS

For safety and ease of installation and replacement, the company recommends the use of the following tools:

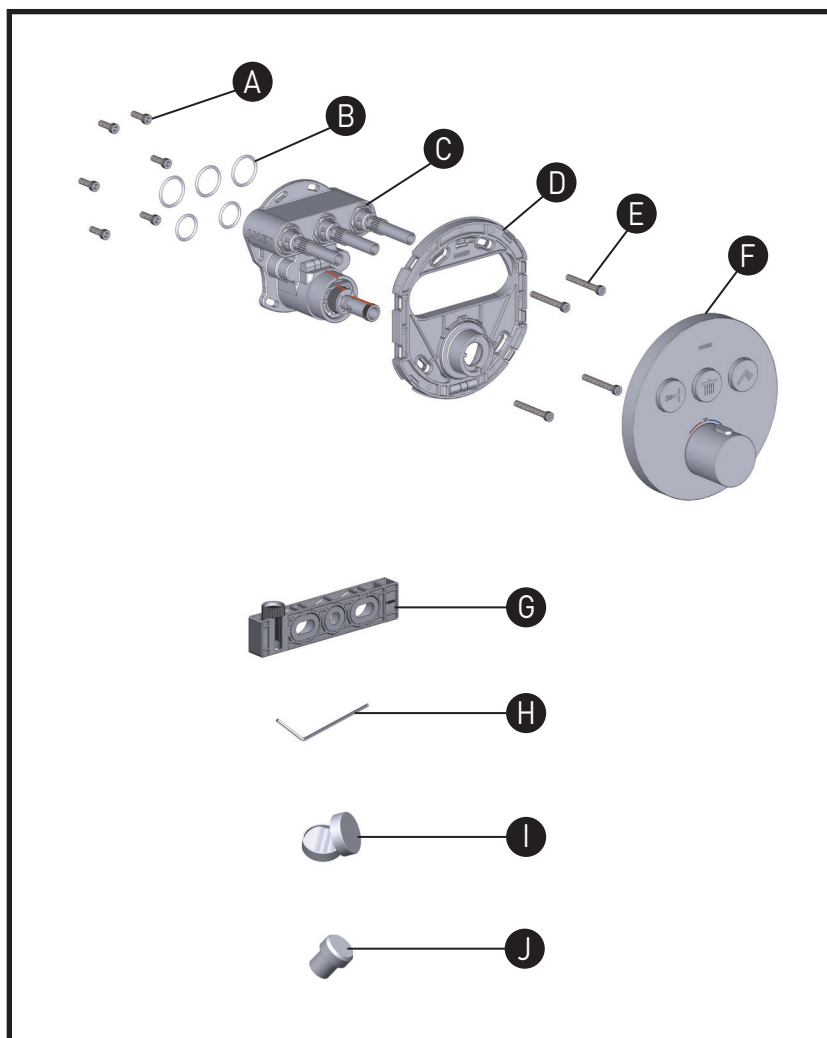


图片仅供参考
(款式因型号而异)

Image is for reference only
(Style varies by model)

记录购买的型号：
(保存安装说明书以备将来参考)

Record Purchased Model Number:
(Save instruction sheet for future reference)



零件清单

- A. M5 x 12螺丝 (x6)
- B. O型圈 (x5)
- C. 恒温阀体组件
- D. 恒温连接板组件
- E. M5 x 40螺丝 (x4)
- F. 恒温面板组件
- G. 按键调节尺
- H. 4mm六角扳手
- I. 硅脂
- J. 增高零件

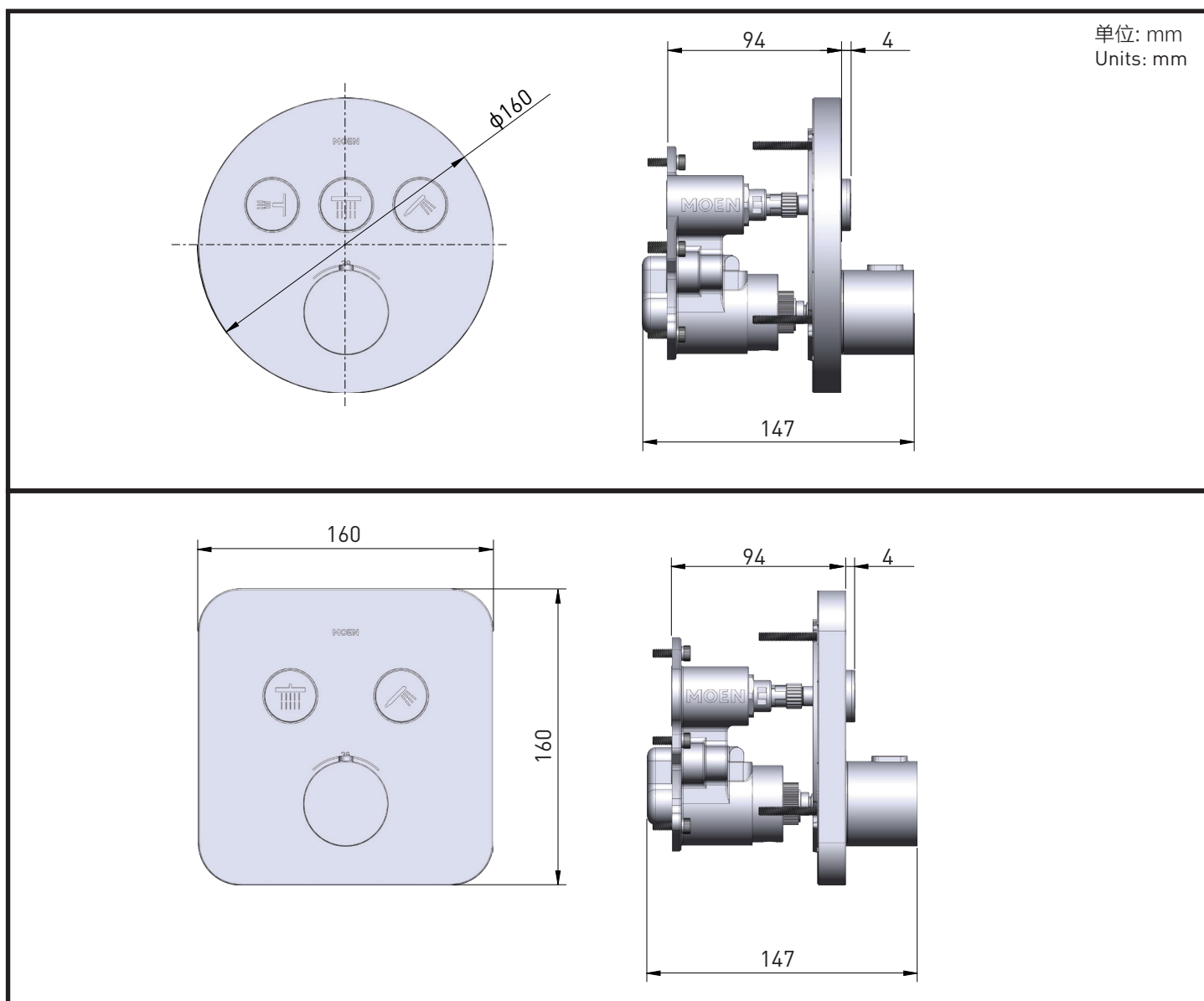
Parts List

- A. M5 x 12 Screw (x6)
- B. O-ring (x5)
- C. Thermostatic valve body assembly
- D. Thermostatic connecting plate assembly
- E. M5 x 40 Screw (x4)
- F. Thermostatic panel assembly
- G. Button adjusting ruler
- H. 4mm hex wrench
- I. Silicone grease
- J. Elevation part

注：零件清单因型号而异。

Note: Parts list varies by model.

尺寸参数 Dimension Parameter



敬告: 在墙上钻孔前, 请确保钻孔处墙内没有管道及电缆!
申明: 本公司保留更改产品结构不另行通知的权利。

注意事项:

1. 本产品已经通过出厂检测及调试, 请勿自行拆卸。
2. 安装前, 请务必先清除墙体预埋水管内的杂物及污泥, 以免影响出水功能。
3. 清洗本产品时需要小心, 尽管本产品的表面镀层极其耐用, 但仍有可能被尖利摩擦物或打光物所损伤。清洗时只需要用湿布轻轻擦拭, 然后用软毛巾拭干即可。
4. 在安装或拆卸龙头前, 首先一定要断掉水源, 然后打开龙头, 释放水压, 并检查水路, 确保水源彻底关闭。
5. 当您在钻孔和安装时请注意安全。

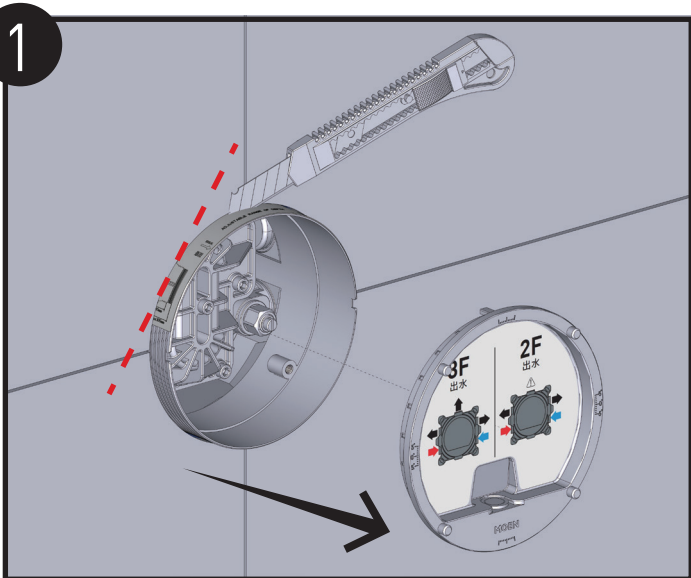
WARNING: Before drilling holes in the wall, make sure there are no pipes or cables inside the wall!

DECLARATION: We reserve the rights to amend the specification without prior notification.

CAUTION:

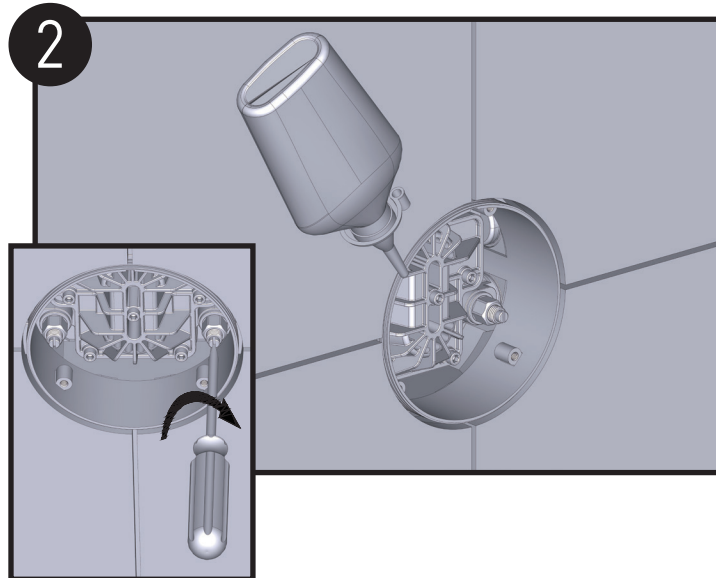
1. The product has passed the functionality test before ex-factory, please do not disassemble by yourself.
2. Prior to installing new faucet, flush supply lines to remove any accumulated debris that may caused outlet failure.
3. Clean faucet with only water and a soft cloth. Do not use abrasive cleaning pads or harsh/abrasive chemicals, which will damage faucet finish.
4. Always turn water supply OFF before removing existing faucet or installing new faucet. Open faucet handle to ensure complete water shut-off has been accomplished.
5. Please be careful of your safety in installation process.

安装说明 Installation Instructions



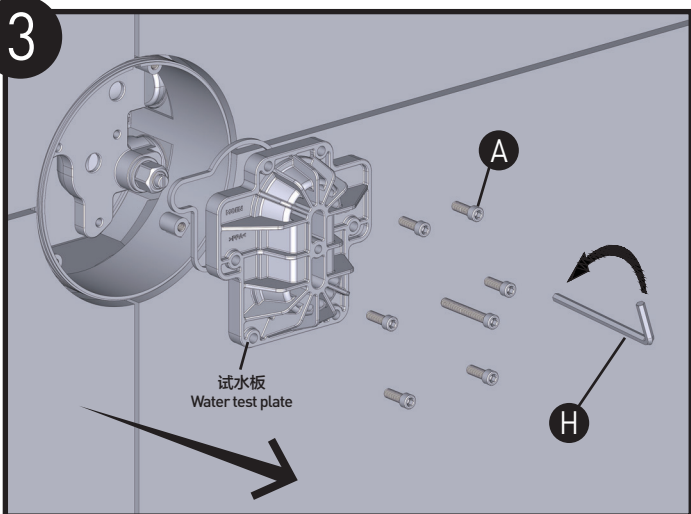
取下预埋盒保护盖，用剪线钳或美工刀将高出墙面的塑料壳体去除直至平齐墙面。

Remove the rough-in box protective cover. Using wire cutter or a utility knife, trim any excess plastic housing protruding from the wall until it is flush with the wall surface.



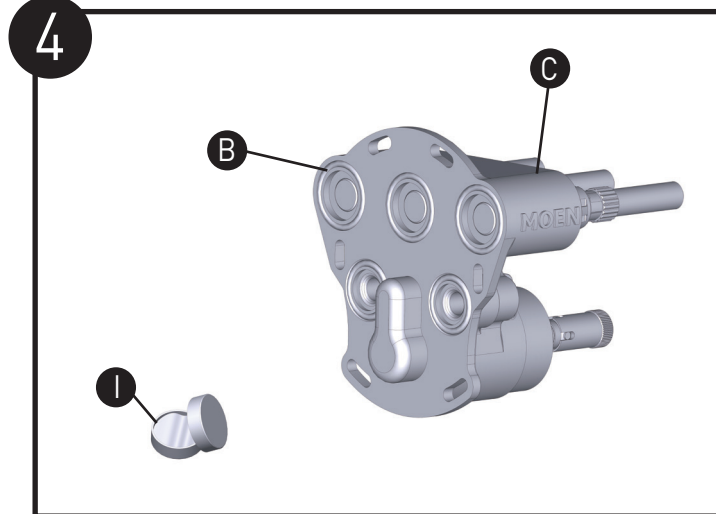
用防水密封胶完全填充墙面开口与塑料壳体之间的空隙，并使用一字螺丝刀顺时针拧紧左右两个止逆阀至关闭状态。

Apply waterproof sealant to completely fill the gap between the wall opening and the plastic housing. Tighten the two check valves (left and right) clockwise with a flathead screwdriver to closed.



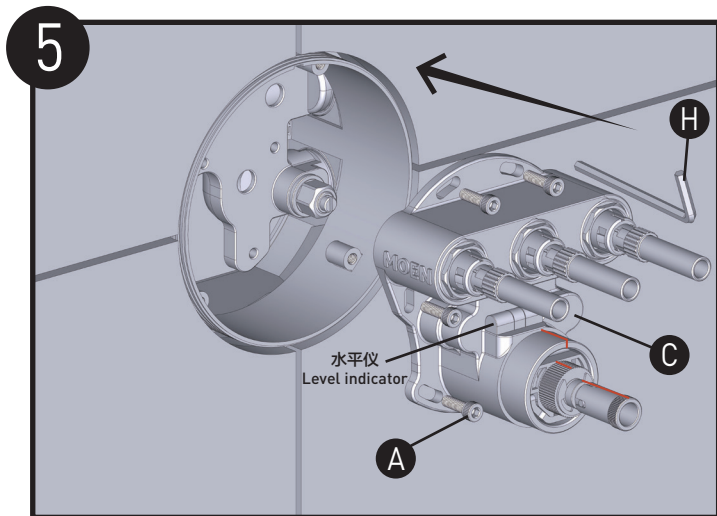
用4mm六角扳手 (H) 拧松螺丝 (A)，拆下试水板。

Use the 4mm hex wrench (H) to loosen the screws (A) and remove the water test plate.



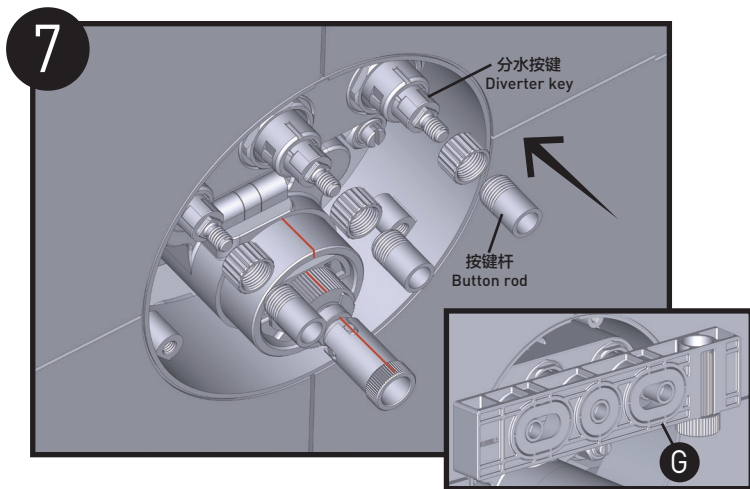
用硅脂 (I) 涂抹在恒温阀体组件 (C) 底部密封O型圈 (B) 上。

Apply silicone grease (I) to O-ring (B) at bottom of thermostatic valve body assembly (C).



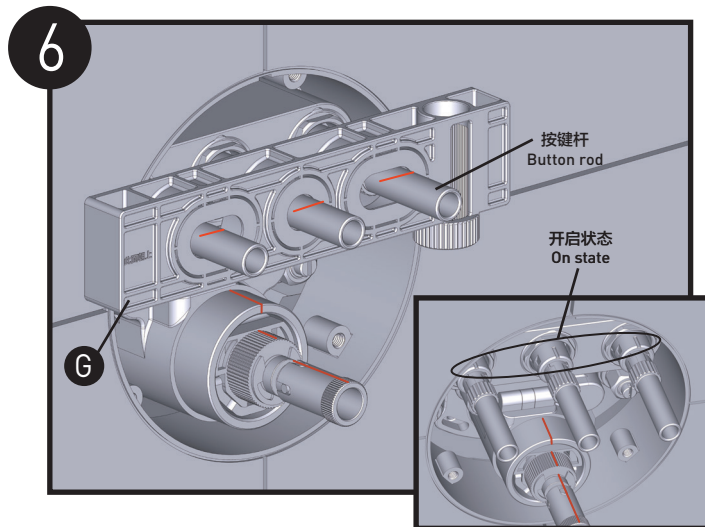
将恒温阀体组件 (C) 固定到预埋盒内。将恒温阀体组件 (C) 上的水平仪调至水平并用4mm六角扳手 (H) 拧紧螺丝 (A) 将其固定。**注：**此阀体支持左右歪斜可调整的角度为 $\pm 5^\circ$ 。

Insert the thermostatic valve body assembly (C) into the rough-in box body. Level the thermostatic valve body (C) using the built-in level indicator and tighten screw (A) with the 4mm allen wrench (H) to secure it. **Note:** The valve body allows for left and right adjustments within a range of $\pm 5^\circ$.



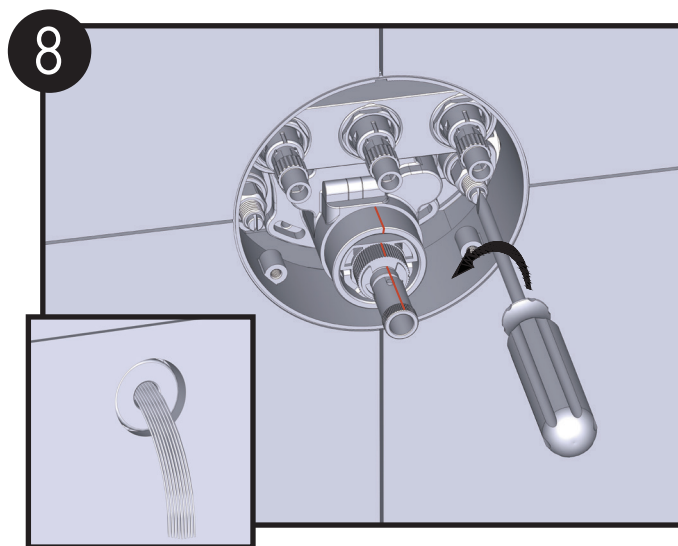
将按钮杆拆下并裁切掉多余的部分，再将其拧紧回分水按键上，最后再用调节尺 (G) 核对高度是否正确。**注意：**在切割按钮杆时要保证切割的面是平齐的，否则会影响面板按钮的外观。

Remove the button rod and cut off the excess length according to the mark. Reinstall it onto the diverter key and check the height alignment using the button adjusting ruler (G). **Note:** Ensure a clean, perpendicular cut on the button rod to avoid affecting the appearance of the button cover.



将调节尺 (G) 对准按钮杆紧贴在瓷砖墙面上，用记号笔在按钮杆上画出平齐于调节尺 (G) 平面的记号。**注意：**在标记校准按钮杆时，按钮杆要为凸起 (开启) 状态。

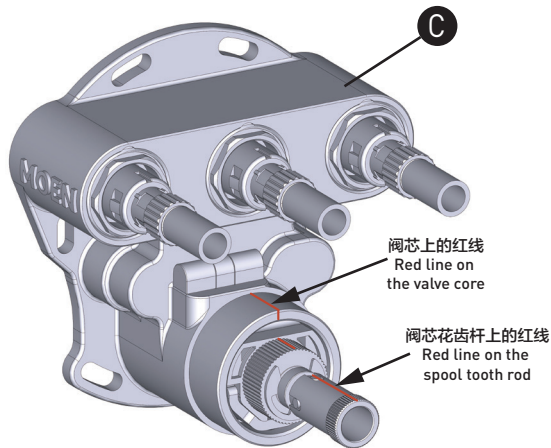
Align the button adjusting ruler (G) with the top of the button rod so that it sits flush against the tile surface. Mark the button rod at the level of the button adjusting ruler (G) using a marker. **Note:** Ensure the button rod is in the raised position (on state) when marking the button rod.



用一字螺丝刀逆时针松开预埋盒上的左右两个止逆阀通水，并查看管道通水情况。

Loosen the two check valves (left and right) on the rough-in box counterclockwise using a flathead screwdriver to allow water flow. Check all pipe connections for leaks.

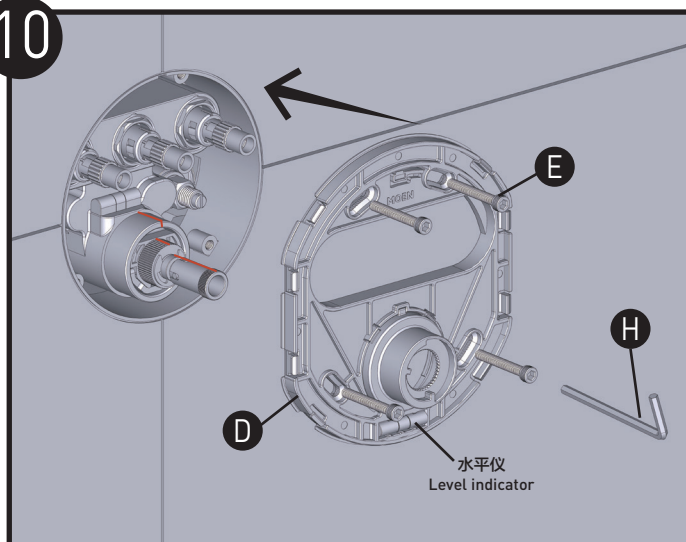
9



恒温阀芯在出厂时已进行全检测温。转动阀芯花齿杆确保杆上的红线与阀芯上的红线对齐（一般红线画在正上方）。

The thermostatic valve core has been fully tested at the factory. Ensure the red line on the spool tooth rod aligns with the red line on the valve core by rotating the spool tooth rod (the red line is typically at the top).

10

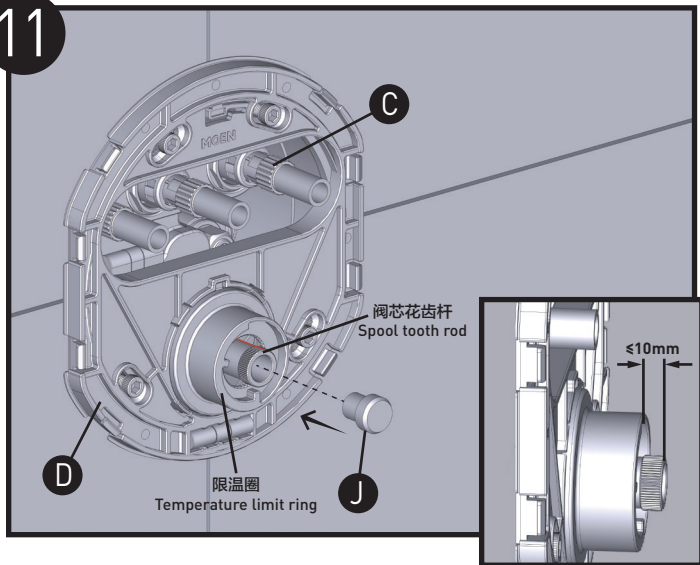


将恒温连接板组件 (D) 上的水平仪调至水平并按图示使用4mm六角扳手 (H) 拧紧螺丝 (E) 将其固定。

注：拧紧螺丝的扭矩约为0.4~1Nm。

Level the thermostatic connecting plate assembly (D) using the built-in level indicator and tighten screw (E) with the 4mm allen wrench (H) to secure it. **Tightening torque:** 0.4-1Nm.

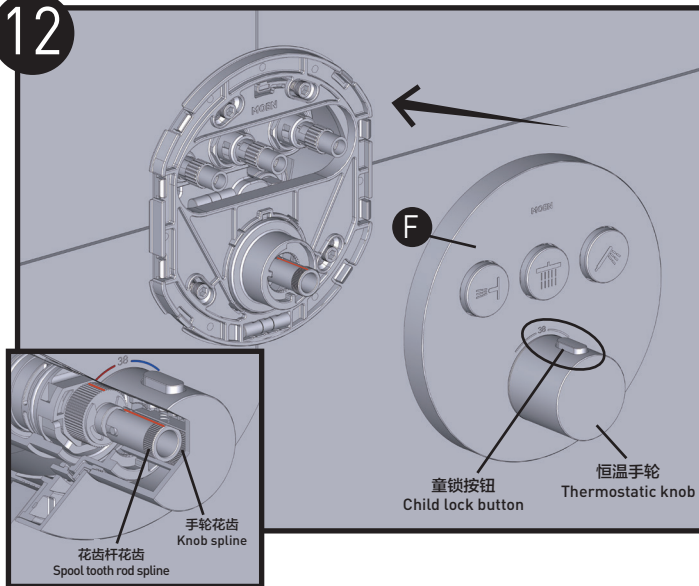
11



如图所示，测量阀芯花齿杆与限温圈表面的距离。当恒温阀体组件 (C) 上的阀芯花齿杆与恒温连接板组件 (D) 上的限温圈表面的距离 $\leq 10\text{mm}$ 时，要将增高零件 (J) 装入阀芯花齿杆内以辅助恒温面板组件 (F) 安装，反之无需装入。

Measure the distance between the spool tooth rod and the surface of the temperature limiting ring as shown in the figure. When the distance between the spool tooth rod on the thermostatic valve body assembly (C) and the surface of the temperature limiting ring on the thermostatic connecting plate assembly (D) is less than or equal to 10mm, the elevation part (J) should be installed inside the spool tooth rod to assist with thermostat panel assembly (F) installation. Otherwise, it is not necessary to install it.

12



按图示安装恒温面板组件 (F)。

注意：1. 将恒温手轮的花齿与阀芯花齿杆的花齿对接上。

2. 将恒温手轮的童锁按钮对准38℃刻度。

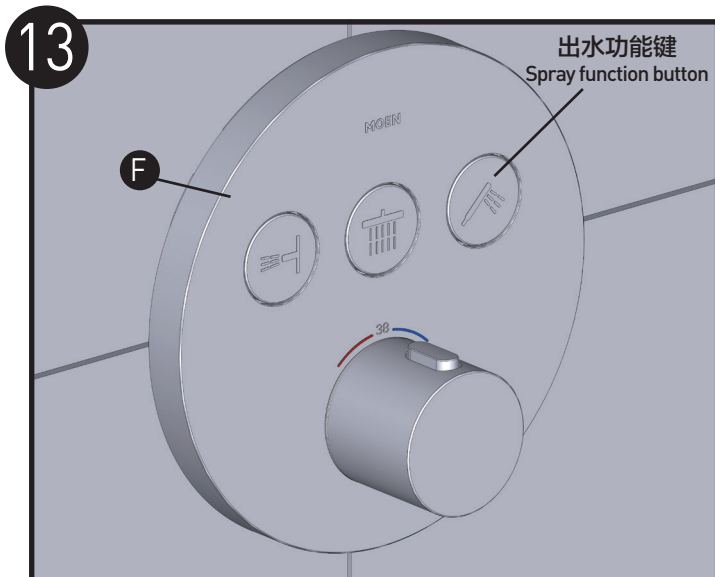
3. 恒温手轮正确安装好之后，童锁按钮即可正常工作。

Install the thermostat panel assembly (F) as shown in the figure.

Note: 1. Align the splines of the thermostatic knob with the splines of the spool tooth rod.

2. Align the child lock button on the thermostatic knob with the 38°C mark.

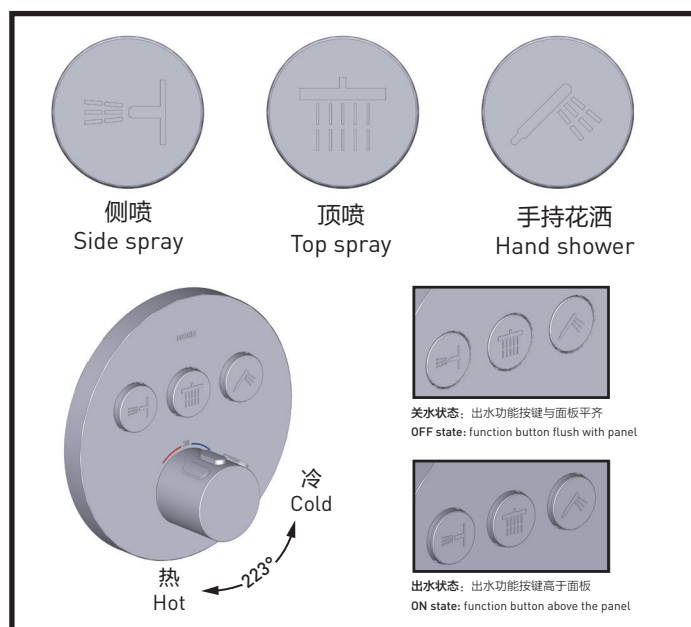
3. After the thermostatic knob is correctly installed, the child lock button should function properly.



按压所有出水功能键与面板（F）保持平齐（关水状态）。
安装完毕。

Press the three spray function buttons to align them flush with the panel (F) (in the off state). The installation is now complete.

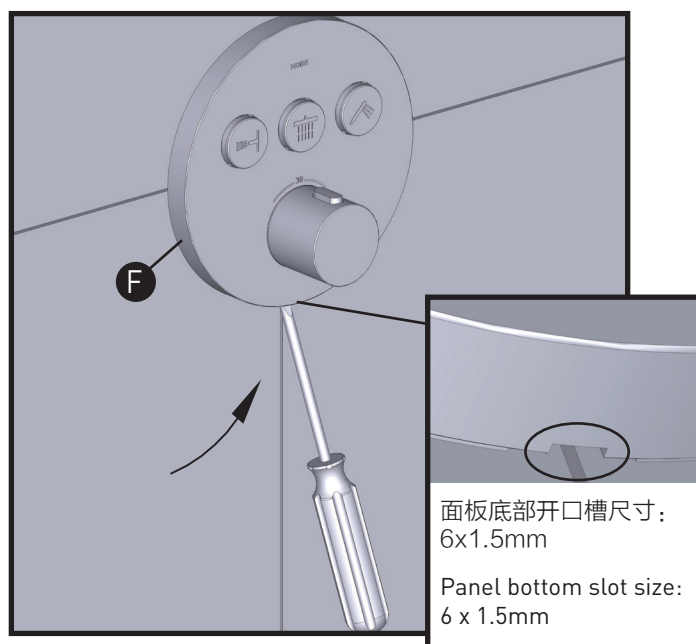
使用说明 Use Instructions



按下童锁并逆时针旋转手轮为热水模式，反之冷水模式；
按下出水功能键可选择对应出水模式。

Press the child lock button and turn the knob counterclockwise for hot water mode, clockwise for cold water mode.
Press the spray function button to select the corresponding water output mode.

面板拆卸说明 Panel Removal Instructions



使用一字螺丝刀对准面板底部的开口槽旋转一圈可将
面板组件（F）拆下。

Use a flathead screwdriver to align with the slot at the bottom of the panel and turn it one full circle to remove the panel assembly (F).

产品售后保修条款

本产品是在高质量标准及生产工艺下制造的，本公司承诺为消费者购买的产品提供有期限免费保修及终身维修服务。

龙头免费保修期为：阀芯5年，电磁阀感应器2年，其它附件如淋浴杆、软管、花洒、落水、把手、装饰盖、提拉杆、混水器等保修期均为2年有限。均自消费者购买日（以本产品分销商开具的发票或收据上载明日期为准）起计。

免费保修范围为产品及产品配件（如淋浴杆、软管、花洒、落水、把手、装饰盖、提拉杆、混水器等）由于材质及工艺原因而造成的故障或损坏。免费保修期内，我们将无偿为您提供修理服务及更换发生故障的产品或产品配件。本公司的售后服务责任仅限于对故障产品的修理，而不延及您因产品故障而发生的其他损失，法律另有规定的除外。

您需了解：产品外观碰伤、刻划痕迹，以及滥用及不正当保养所导致的故障或损坏，均不属于免费保修范围。即使在免费保修期内，属下列（1）-（5）情况之一的，需酌情收取修理费用：

1. 不能出示相符的保修卡和有效购买凭证情况的；
2. 未按使用说明告知的使用方法和注意事项造成的故障；
3. 自行拆卸、维修、改装所造成的故障和损坏；
4. 由于不可抗力等外部原因引起的故障和损坏；
5. 由于运输、搬运、挤压等造成的损坏。

对于保修期外或不在保修范围内的产品，如需维修，本公司将酌情收取上门费、人工费及材料费。

本保修条款仅对原始消费者和酒店行业的购买者有效，并不适用于本产品工业、商业、贸易和非酒店行业的使用。

如对本保修条款内容有任何疑问，请拨打400 630 8866 咨询热线，或向当地分销商咨询。对于中国大陆以外的市场，此产品的保修及保障服务详情请咨询当地经销商。

本公司对本产品保修拥有最终解释权。

PRODUCT LIMITED WARRANTY

We offer limited warranty and lifetime maintenance for the products, which are all manufactured with high standards of workmanship.

The period of warranty shall start from the date of purchase of the product (according to the invoice or receipt issued by the company distributors) and shall cover a period of the following: the warranty period for cartridge is 5 years, the warranty period for solenoid valve sensor is 2 years, the warranty period of other accessories such as shower bar, hose, shower, drain assembly, handle, cover, lift rod, aerator etc. is 2 year.

This warranty is your coverage against material and workmanship malfunction or defects in the products or components (such as shower bar, hose, shower, drain assembly, handle, cover, lift rod, aerator etc.). During the warranty period, we offer free maintenance and changing of malfunctioned products or product components. The company's after sales service liability is limited to the maintenance of faulty items and does not cover your other losses caused by product malfunction, except for otherwise stipulated by law.

Cosmetic damages (scratches, dents, etc.) and malfunction or defects caused by abuse or improper maintenance is not covered by this warranty. Although the warranty period remains valid, in case of the following conditions (1) - (5), the maintenance cost (material cost and labor cost) shall still be charged as the case may be:

1. Corresponding warranty card and valid invoice cannot be presented;
2. Faults were caused by the incompliance with the instructions and precautions provided in the user's manual;
3. Damages and faults were caused by self-actuated dismantling, repair and refit;
4. Faults and damages were caused by external factors such as force majeure;
5. Damages were caused by transportation, unloading and extrusion, etc.

This warranty is valid for the original consumers only (including hotel use), and excludes industrial and commercial use of the product (except for hotel use). This card is only responsible for product maintenance rather than any other liabilities.

In the event that the product requires maintenance but exceeds the warranty period, or that the product is not covered by this warranty, labor cost and material cost shall be charged as the case may be.

Please call 400-630-8866 or contact local dealer for any question. For markets exclude Chinese mainland, the terms and conditions of warranty shall differ between product categories and countries. Please refer to warranty stated by local distribution.

The company Incorporated shall have the final interpretation of the product warranties.

MOEN® 摩恩

合格证 Compliance Certification

产品名称
Product Name

检验员
Inspector

生产日期
Date of Production

入墙式恒温花洒龙头面板组件
In-Wall Thermostatic Shower
Panel Kit

富俊汇赢科技（上海）有限公司
中国（上海）自由贸易试验区新杨公路
1800弄1号4幢207室
邮编：201413

Fortune Brands Innovations (Shanghai) Co., Ltd
Room 207, Building 4, No. 1, Lane 1800, Xinyang Highway,
China (Shanghai) Pilot Free Trade Zone