

Thank you for choosing Schneider Electric™ AvatarOn A series products. To ensure proper application of our product, please read through the following information before installation and use.

This application guide applies to the following products.

(Notes: suffix _XX//XX/..._C5/G2... etc. mean the colors and sales areas)

| Cat. No. | Description |
|------------|---------------------------------|
| M3T31_1F | 16AX 250V~ 1W SW w Fluo S sized |
| M3T31_2 | 16AX 250V~ 2W SW S sized |
| M3T31_M1F | 16AX 250V~ 1W SW w Fluo M sized |
| M3T31_M2 | 16AX 250V~ 2W SW M sized |
| M3T31_D20N | 20A 250V~ DP SW w LED S sized |
| M3T31_IM | 16AX 250V~ Inter SW S sized |
| A7031F | 16AX 250V~ 1G 1W SW w Fluo E |
| A7032F | 16AX 250V~ 2G 1W SW w Fluo M |
| A7033F | 16AX 250V~ 3G 1W SW w Fluo S |
| A7031_2 | 16AX 250V~ 1G 2W SW E |
| A7032_2 | 16AX 250V~ 2G 2W SW M |
| A7033_2 | 16AX 250V~ 3G 2W SW S |

SPECIFICATIONS

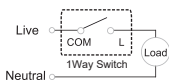
| | |
|--------------------------------|-------------|
| Voltage | : 250V~ |
| Mounting centre | : 83.5mm |
| Current | : 16AX /20A |
| self ballasted lamp Load(16AX) | : 200W |
| self ballasted lamp Load(20A) | : 250W |

IMPORTANT NOTE

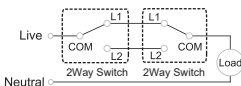
1. The product must be installed by qualified electricians.
2. Please check local wiring regulations before installation.
3. Please use the standard wall box.
4. Safekeeping the cover to prevent damage during product installation.
5. Turn off the power supply during product maintenance. Use water only. Do NOT use corrosive chemicals.
6. Please prevent from contamination and degradation during decoration and renovation.
7. When blank space in grid plate cannot be fully filled in by functional modules, blank cover module must be used to fill in the gap.

WIRING DIAGRAMS

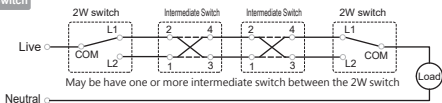
1 Way Switch

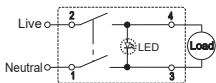


2 Way Switch



Intermediate Switch



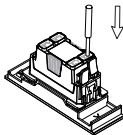


MOUNTING INSTRUCTION

The process of connecting cables :

- 1 Strip the cable to about 13mm length.
- 2 Push in the cables.

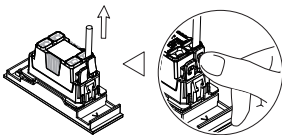
* For screw type terminal, push in the cables and tighten the screws.



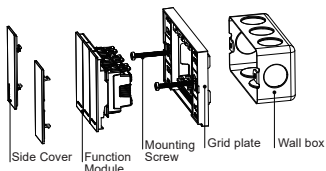
The process of releasing cables :

- 1 Press the release button by fingers before pulling out the cables.
- 2 Pull out the cables.

* For screw type terminal, unscrew and pull out the cables.



Please refer to the following diagram for proper installation.

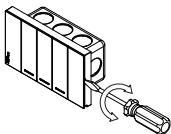


Remarks:

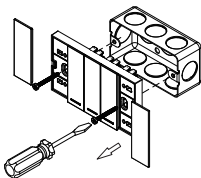
For side cover mounting, align the clip locks on the grid plate and press side cover. Complete engagement of the clip locks is indicated by two clear clicks.

The process of releasing the module

- 1 Insert a screwdriver into the clip lock, twist the screwdriver to remove the side cover.



- 2 Remove the screws.



- 3 Insert a screwdriver into the clip lock, twist the screwdriver and push the function module.

