

Thank you for choosing **Schneider Electric** AvatarOn series products. To ensure proper application of our product, please read through the following information before installation and use.

### **This application guide applies to the following products.**

(Notes: suffix WE/WG/GH/LW/WD/ST\_C5/G2 etc. mean the colors and sales areas)

<b>Cat. No.</b>	<b>Description</b>
E8331EKT	250V 16A Elec Keycard SW

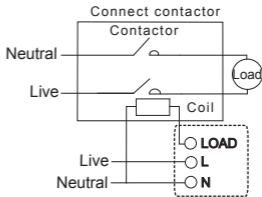
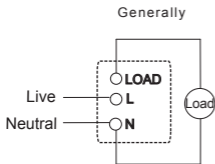
### **SPECIFICATIONS**

Voltage	: 250V~
Mounting centre	: 60.3mm
Current	: 16A
Compliance	: IEC 60669-2-1

### **IMPORTANT NOTE**

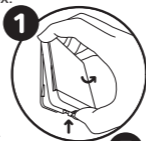
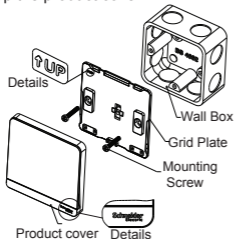
1. The products must be installed by qualified electricians.
2. Please check your local wiring regulations before installation.
3. Please use the standard 86 size wallbox.
4. Safekeeping the cover to prevent damage during product installation.
5. Turn off the power supply when you clean the product. Use a piece of soft, slightly-moistened cloth or tissue paper to wipe off the dust and dirt on the surface. Avoid using corrosive chemicals.

## WIRING DIAGRAMS



## MOUNTING INSTRUCTION

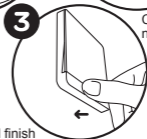
1. Remove the product cover and safekeeping .
2. Connect the wires to the terminals (recommend to leave 10-12mm bare metal wire) and tighten the terminal screws.
3. Screw the grid plate onto the wall box.
4. Snap the product cover.



Press the release key to remove cover



Change to new cover



Click and finish