



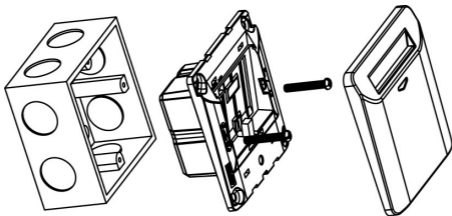
APPLICATION GUIDE
Electronic Keycard Switch

CAT. NO.
E8431EKT

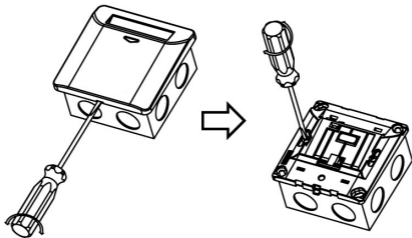
ZENcelo

MOUNTING INSTRUCTION

Please refer to the following diagram for proper installation.



Remarks: For surround mounting, align the clip locks on the faceplate and press firm on the surround. Complete engagement of the clip locks is indicated by a clear "click" sound.



Thank you for choosing **Schneider Electric** ZENcelo Electronic Keycard Switch. To ensure proper application of our product, please read through the following information before installation and use.

This application guide applies to the following products.



Cat.no.

E8431EKT

Description

16A Electronic Keycard Switch with
Time Delay

SPECIFICATIONS

Voltage	: 220-240 VAC, 50/60Hz
Maximum Power Rating	: 16A (Resistive Loads)
Dimension	: 87mm x 87mm x 39.1mm
Mounting Centre	: 60.3mm
LED Color	: Amber
Compliance	: IEC60669-2-1

IMPORTANT NOTE

1. Do not use transparent keycard, which may affect the performance of this product.
2. Power will be loaded after inserting keycard to the switch. When the keycard has been removed, the power will be unloaded with 30 seconds time delay.
3. The LED keeps flashing or stay on without inserting any keycard, depending on the status setting for the LED. The LED will be off after keycard is inserted and remains off until 30 seconds time delay after removing the keycard.
4. Please check your local wiring regulation before installation.
5. Maximum keycard size is 85mm x 55mm, thickness 0.5mm-2mm.

WIRING DIAGRAMS

