



**Application Guide**  
**4A 2 Way Centre Off**  
**Retractive Switch**

**CAT. NO.**  
KB31BP\_2

**Vivace**

Thank you for using **Schneider Electric** Vivace Centre Off Retractive Switch.  
Please read the following important information before installation and use.

**This application guide applies to the following Vivace product.**



**Cat No.**  
KB31BP\_2

**Description**  
4A 2 Way Centre Off  
Retractive Switch

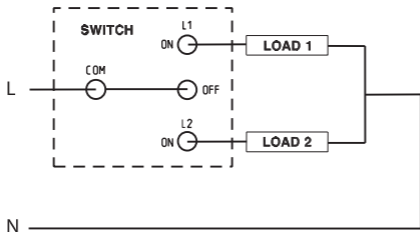
## **SPECIFICATIONS**

Voltage	: 250V ac, 50Hz
Load Type	: 4A, Inductive Load
Dimension	: 86mm x 86mm
Mounting Centre	: 60.3mm (wall box with 35mm depth or above)
Terminal	: Pillar Terminal
Compliance	: IEC60669-1, MS IEC60669-1, SS227

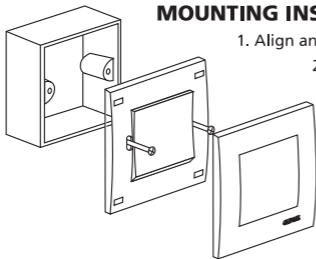
## IMPORTANT NOTE

1. Electrical installation must be carried out by a qualified electrician.
2. Please check your local wiring regulations before actual installation.

## WIRING DIAGRAM



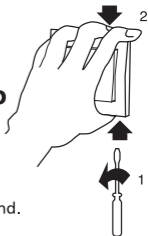
## MOUNTING INSTRUCTION



1. Align and place the switch on the wall box.
2. Fasten with screws on both sides.
3. Cover with Surround.

## REMOVING THE SURROUND

1. To remove the Surround, carefully insert a screwdriver between the Surround and the wall surface. Then twist the screwdriver to dislodge the Surround from the Gridplate.
2. Use the other hand to support and remove the Surround.



## PRODUCT CARE

When cleaning, use a soft damp cloth / tissue to remove dust or dirt. Ensure the product is switched off during cleaning. Use very mild dishwashing detergent solution only. **DO NOT USE** caustic cleaning agents.