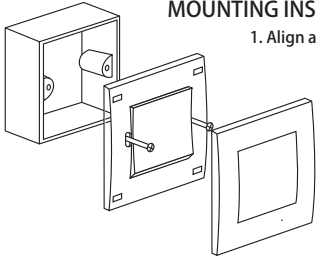


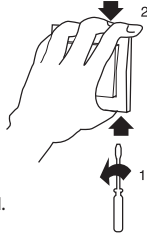
MOUNTING INSTRUCTION

1. Align and place the switch on the wall box.
2. Fasten with screws on both sides.
3. Cover with Surround.



REMOVING THE SURROUND

1. To remove the Surround, carefully insert a screwdriver between the Surround and the wall surface. Then twist the screwdriver to dislodge the Surround from the Gridplate.
2. Use the other hand to support and remove the Surround.



PRODUCT CARE

When cleaning, use a soft damp cloth / tissue to remove dust or dirt. Ensure the product is switched off during cleaning. Use very mild dishwashing detergent solution only. DO NOT USE caustic cleaning agents.

Schneider
Electric

Application Guide Electronic Keycard Switch

CAT. NO.
KB31EKT

Vivace

IS18124

Inside

Thank you for choosing Schneider Electric Vivace Electronic Keycard Switch. To ensure proper application of our product, please read through the following information before installation and use.

This application guide applies to the following Vivace products.



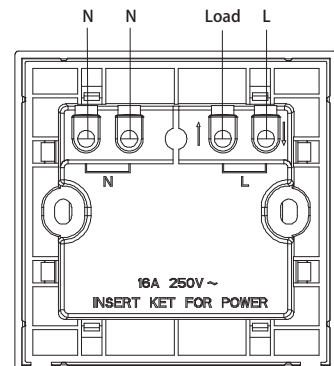
Cat No.
KB31EKT

Description
16A Electronic Keycard Switch
with Time Delay

SPECIFICATIONS

Voltage : 220VAC, 50Hz
Load Type : 16A (Resistive Load)
Dimension : 86mm x 86mm
Mounting Centre : 60.3mm
Compliance : IEC60669-2-1

WIRING DIAGRAM



IMPORTANT NOTE

1. Electrical installation must be carried out by a qualified electrician.
2. Please check your local wiring regulations before actual installation.