

Thank you for choosing Schneider Electric™ AvatarOn A series products. To ensure proper application of our product, please read through the following information before installation and use.

**This application guide applies to the following products.**

(Notes: suffix\_XX/XX/...\_C5/G2... etc. mean the colors and sales areas)

Cat. No.	Description
M3T_USB	1 Port 2.1A USB S sized
M3T_USB2	2 Port 2.4A Type A+C USB 2S Sized
A70426USB_UST	16A 250V~ 3Pin Uni Skt w USB
A70426USB_IS	16A 250V~ Intl Skt w USB

### SPECIFICATIONS

USB Input Voltage	: 100-250V~
USB Input Frequency	: 50/60Hz
USB Input Current	: 0.45A
USB Output	: 5V $\overline{\text{---}}$ 2.1A Max(M3T_USB), 5V $\overline{\text{---}}$ 2.4A Max(M3T_USB2)
Protection	: Over heat, over current, over voltage
Operation Temperature	: Room Temperature
Socket Rating	: 250V~ 16A
Mounting centre	: 83.5mm

### IMPORTANT NOTE

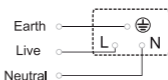
1. The product must be installed by qualified electricians.
2. Please check local wiring regulations before installation.
3. Please ensure using standard wall box with 47 mm depth for product installation.
4. Suitable for mounting on concrete or other non-combustible surface only.
5. Safekeeping the surround to prevent damage during product installation.
6. Turn off the power supply during product maintenance. Use a piece of soft cloth or tissue paper to wipe off the dust and dirt on the surface. Avoid using corrosive chemicals.
7. Kindly ensure your device's Battery Charging Specification is suitable with this USB Charger before charging.
8. Do not insert metal objects into USB Charger.
9. User will feel some heat at the product surface when charging is in progress.
10. Device's charging performance will be impacted by device's charging protocol, quality of charging cable used, and other relevant factors.
11. Some charging cables with electronic design might function as charging device.
12. This permanently connected equipment does not contain internal disconnected device, a readily accessible disconnected device should be provided externally.
13. Not advisable to use with multi adaptors.
14. Not allowed reverse charging.
15. Indoor use only.
16. Not recommended to install the USB module adjacent to power sockets with high power appliance plugged in.
17. The USB module is equipped with a safety feature to stop charging under over temperature condition.
18. When blank space in grid plate cannot be fully filled in by functional modules, blank cover module must be used to fill in the gap.
19. Possibility of plug-in interference may occur during simultaneous socket usage due to plug size variance.

## WIRING DIAGRAMS

USB

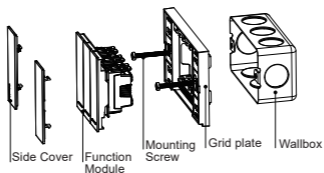


Socket



## MOUNTING INSTRUCTION

Please refer to the following diagram for proper installation.



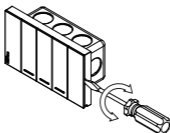
### Remarks:

For side cover mounting, align the clip locks on the grid plate and press side cover. Complete engagement of the clip locks is indicated by two clear clicks.

### The process of releasing the module

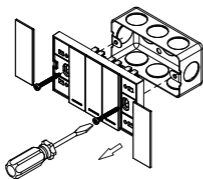
1

Insert a screwdriver into the clip lock, twist the screwdriver to remove the side cover.



2

Remove the screws.



3

Insert a screwdriver into the clip lock, twist the screwdriver and push the function module.

