

Thank you for choosing Schneider Electric™ AvatarOn A series products. To ensure proper application of our product, please read through the following information before installation and use.

This application guide applies to the following products.

(Notes: suffix_XX/XX/..._C5/G2... etc. mean the colors and sales areas)

Cat. No.	Description
M3T1RJ4M	Tel Mech w/shu
M3T1TV75M	75Ohm Coax TV Mech
M3T1RJ5M	CAT5e Data Mech w/shu
M3T1RJ6M	CAT6 Data Mech w/shu
M3T1TVFM	F-Type TV Mech
M3T01BC	Blank Cover Module
M3TNRD	Red Neon Indicator

SPECIFICATIONS

Mounting centre : 83.5mm

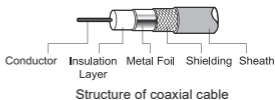
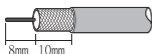
IMPORTANT NOTE

1. The product must be installed by qualified electricians.
2. Please check local wiring regulations before installation.
3. Please use the standard wall box.
4. Safekeeping the cover to prevent damage during product installation.
5. Turn off the power supply during product maintenance. Use water only. Do NOT use corrosive chemicals.
6. Please prevent from contamination and degradation during decoration and renovation.
7. When blank space in grid plate cannot be fully filled in by functional modules, blank cover module must be used to fill in the gap.

WIRING DIAGRAMS

TV outlet wiring instructions

Cut the sheath of coaxial cable according to the following diagram.

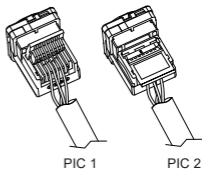


Tel outlet wiring instructions

1. This tel outlet is applicable with cable diameter of 26AWG to 22AWG.
2. Strip wire according to the following diagram.



3. Cable of different colour must be fixed correspondingly.
4. Fix the cable to the position 1,2,3,4 according to the right diagram.(pic 1)
5. Close cover and fasten the wire. (pic 2)

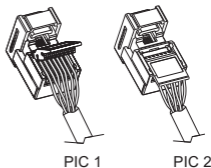


Data outlet wiring instructions

1. This data outlet is applicable with cable diameter of 26AWG to 22AWG.
2. Strip wire according to the following diagram.



3. Fix the cable to the position based on different colors according to diagram (568A/568B).
4. Open the wire pressing cover and put the wire into the outlet based on correct color sequence. (pic 1)
5. Close cover and fasten the wire. (pic 2)

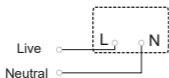


MODULAR WIRING CONFIGURATION

COLOR CODE	T568B	T568A
White-Blue	5	5
Blue	4	4
White-Orange	1	3
Orange	2	6
White-Green	3	1
Green	6	2
White-brown	7	7
Brown	8	8

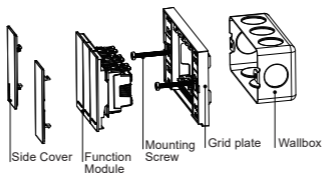
568A/568B

Red Neon Indicator



MOUNTING INSTRUCTION

Please refer to the following diagram for proper installation.



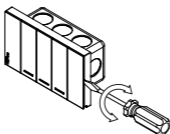
Remarks:

For side cover mounting, align the clip locks on the grid plate and press side cover. Complete engagement of the clip locks is indicated by two clear clicks.

The process of releasing the module

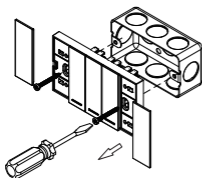
1

Insert a screwdriver into the clip lock, twist the screwdriver to remove the side cover.



2

Remove the screws.



3

Insert a screwdriver into the clip lock, twist the screwdriver and push the function module.

