

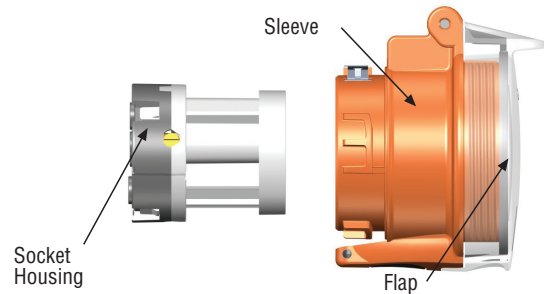
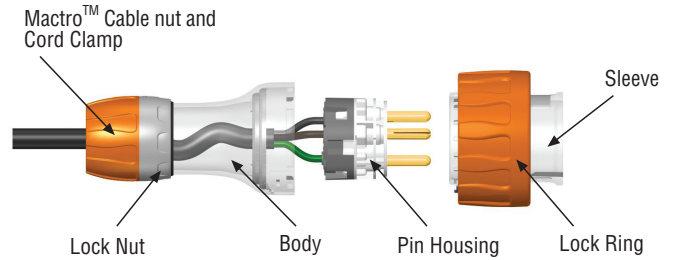


Installation Manual
Plug and Connectors (IP66)

56 Series™

Wiring Diagram

Covers up to 20A 3 Phase 4-7 pin versions and single phase 20A 3 pin version.



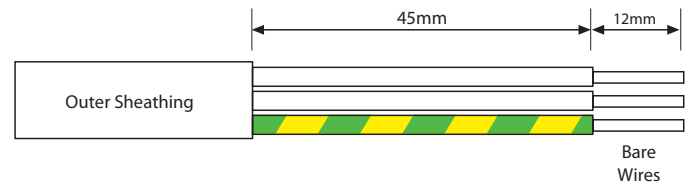
Wiring Instructions

1. Thread cable through Mactro™ cable nut and strip as shown.
2. If using the QC type product, the conductor **MUST NOT** be twisted. For screw terminals, twist the conductors.
3. Terminate the conductors to the appropriate terminals in the pin housing.
4. **Double check the wires are fitted to the correct terminals and the terminals are secured tight.**
5. Position the pin housing into the front sleeve.
6. Attach the body, turning the body 1/4 turn to lock the bayonet mechanism; the spring clip should click into place.
7. Verify the clip has locked into place by twisting the body back to try and open it.
8. Tighten the Mactro™ cable nut to the clamp and seal the cable.
9. Twist the lock nut to the locked position preventing the cable nut from being undone. Complies with AS/NZS 3123 and AS60529 (IP66).

Cable Sizes

	Cable Entry \varnothing	Terminal Capacity
Minimum	7mm	1mm ²
Maximum	16.4mm	4mm ² (QC) 6mm ² (screwed)

Stripping Detail



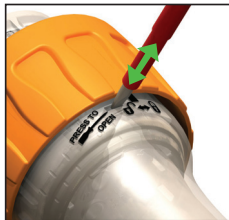
1 - Open It



No need to fully remove the cable nut, it can stay on!

Place 56MACTRO unlocking tool into spring clip, rotate lock-nut to **unlocked**.

Alternatively, insert screwdriver and **press** spring clip, then rotate lock-nut to **unlocked**.



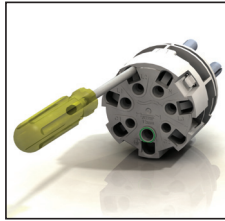
PRESS clip once and **REMOVE** screw driver



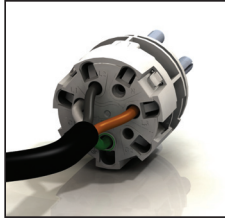
TWIST plug body left to open

2 - Wire It

QC spring terminals - clamping on conductors



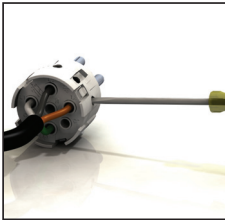
Fully insert a flat screwdriver into the slot to open terminal.



Insert stripped Non-Twisted conductor and remove screwdriver.

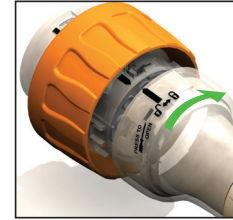
Or

If using conventional screw terminals.



Insert stripped conductors and tighten terminal screws.

3- Close It



Align arrows, twist body right and **click** to close



Tighten the cable gland until fully done up, then rotate the lock nut to **locked**.

Best fit Screwdriver = 4mm

